

# RNAV (GPS) RWY 23

BERKELEY COUNTY (MKS)

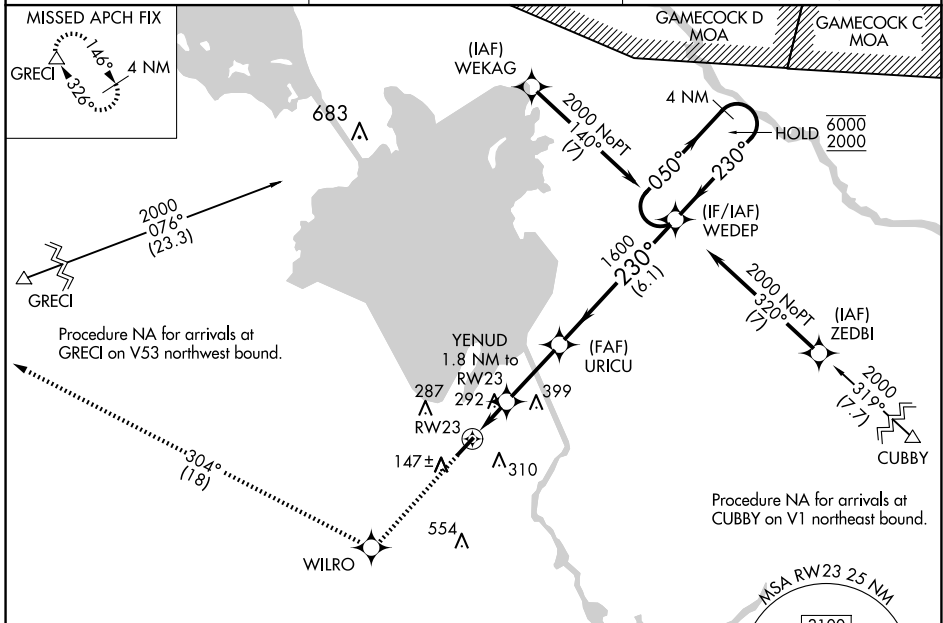
APP CRS	Rwy Idg	<b>5001</b>
<b>230°</b>	TDZE	<b>74</b>
	Apt Elev	<b>74</b>

RNP APCH - GPS.

**Procedure NA at night. Rwy 23 helicopter visibility reduction below 1 SM NA.**  
 When local altimeter setting not received, use Charleston AFB/Intl altimeter setting: increase all MDAs 60 feet and increase LNAV visibility Cat C and D and Circling visibility Cat C and D ¼ SM.

**MISSED APPROACH:** Climb to 2000 direct WILRO and on track 304° to GRECI and hold.

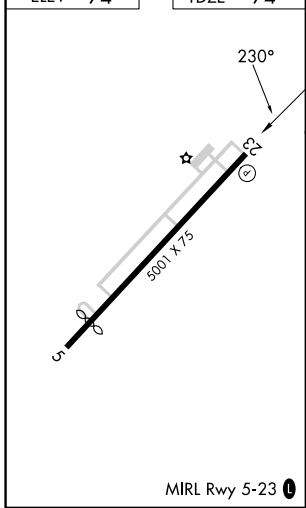
AWOS-3 <b>119.175</b>	CHARLESTON APP CON <b>121.275 379.925</b>	UNICOM <b>123.05</b> (CTAF) <b>0</b>
--------------------------	--	---



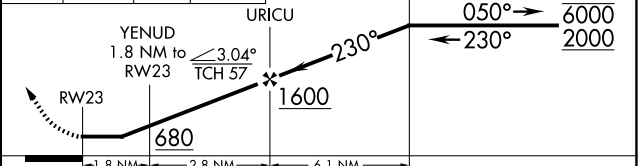
SE-2, 17 APR 2025 to 15 MAY 2025

SE-2, 17 APR 2025 to 15 MAY 2025

ELEV <b>74</b>	TDZE <b>74</b>
----------------	----------------



2000	WILRO	304° tr	GRECI	VGSI and descent angles not coincident (VGSI Angle 3.00/TCH 44).	4 NM Holding Pattern
------	-------	---------	-------	--	----------------------



CATEGORY	A	B	C	D
LNAV MDA	560-1	486 (500-1)	560-1⅜	486 (500-1⅜)
CIRCLING	580-1 506 (600-1)	620-1 546 (600-1)	700-1¾ 626 (700-1¾)	860-2½ 786 (800-2½)