

|  |                        |   |             |
|--|------------------------|---|-------------|
| WAAS<br>CH <b>77715</b><br><b>W03A</b> | APP CRS<br><b>025°</b> | Rwy Idg<br>TDZE <b>198</b><br>Apt Elev <b>198</b> | <b>5350</b> |
|--|------------------------|---|-------------|

# RNAV (GPS) RWY 3

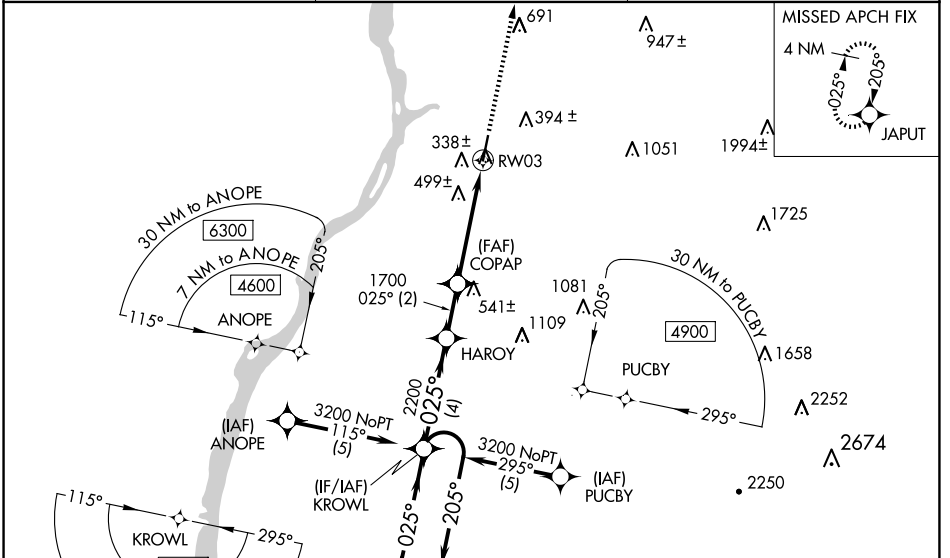
COLUMBIA COUNTY (1B1)

RNP APCH.

**NA** Baro-VNAV NA when using Albany altimeter setting. For uncompensated Baro-VNAV systems, LNAV/VNAV NA below -15°C (5°F) or above 48°C (118°F). Rwy 3 helicopter visibility reduction below ¾ SM NA. When local altimeter setting not received, use Albany altimeter setting and increase all DA 76 feet and MDA 80 feet, increase LPV all Cats, LNAV/VNAV all Cats, LNAV Cats C/D visibility ¼ mile.

MISSED APPROACH: Climb to 3200 direct JAPUT and hold. continue climb-in-hold to 3200.

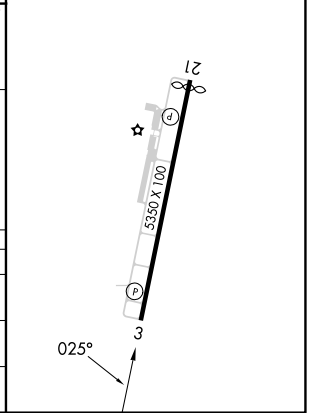
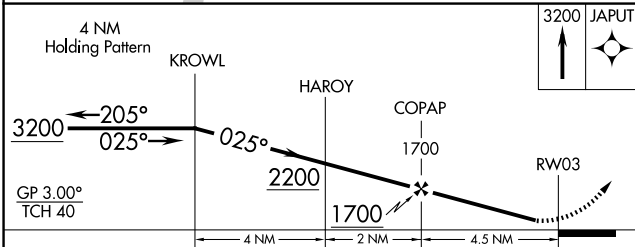
|                          |  |                                |
|--------------------------|--|--------------------------------|
| AWOS-3<br><b>133.525</b> | ALBANY APP CON<br><b>132.825 307.2</b> | UNICOM<br><b>123.05 (CTAF)</b> |
|--------------------------|--|--------------------------------|



NE-2, 17 APR 2025 to 15 MAY 2025

NE-2, 17 APR 2025 to 15 MAY 2025

|                 |                   |
|-----------------|-------------------|
| ELEV <b>198</b> | TDZE <b>198</b>   |
| MIRL Rwy 3-21   | REIL Rwy 3 and 21 |



| CATEGORY     | A                   | B                   | C | D                   |
|--------------|---------------------|---------------------|---|---------------------|
| LPV DA       | 500-1 302 (400-1)   |                     |   |                     |
| LNAV/VNAV DA | 842-2¼ 644 (700-2¼) |                     |   |                     |
| LNAV MDA     | 760-1 562 (600-1)   | 760-1½ 562 (600-1½) |   | 760-1¾ 562 (600-1¾) |