

WAAS CH 72831 W23A	APP CRS 228°	Rwy Idg TDZE Apt Elev	3503 1030 1031
--	------------------------	-----------------------------	---

RNAV (GPS) RWY 23

MONROE COUNTY (MNV)

RNP APCH - GPS.

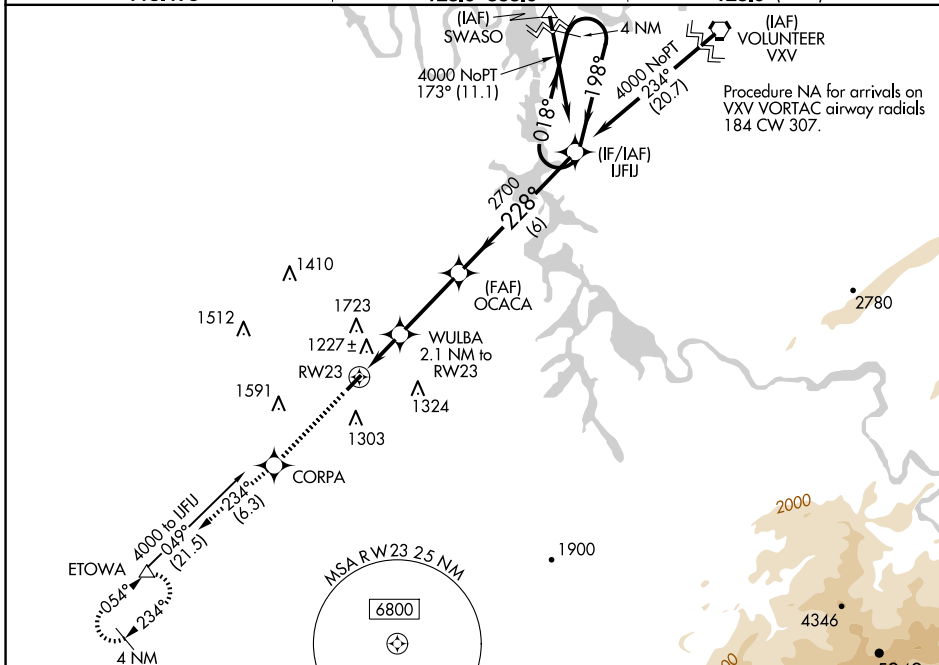
NA Baro-VNAV NA when using Mc Ghee Tyson altimeter setting. For uncompensated Baro-VNAV systems, LNAV/VNAV NA below -17°C or above 54°C. Circling NA NW of Rwy 5-23. When local altimeter setting not received, use Mc Ghee Tyson altimeter setting and increase all DA 64 feet and all MDA 80 feet and increase LPV all Cats, LNAV/VNAV all Cats, LNAV Cat C, and Circling Cat C visibility ¼ mile. Rwy 23 helicopter visibility reduction below 1 SM NA. Procedure NA at night.

MISSED APPROACH:
Climb to 3000
direct CORPA on
track 234° to
ETOWA and hold.

AWOS-3
118.475

KNOXVILLE APP CON
123.9 353.6

UNICOM
123.0 (CTAF)

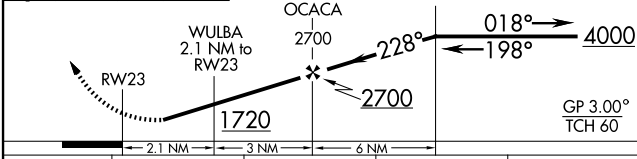
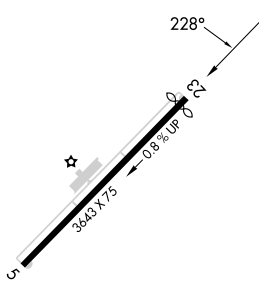


SE-1, 17 APR 2025 to 15 MAY 2025

SE-1, 17 APR 2025 to 15 MAY 2025

ELEV 1031	TDZE 1030
-----------	-----------

3000 CORPA tr 234° ETOWA VGSi and RNAV glidepath not coincident (VGSi Angle 3.00/TCH 20). 4 NM Holding Pattern IJFU



CATEGORY	A	B	C	D
LPV DA		1376-1 ¹ / ₈	346 (400-1 ¹ / ₈)	NA
LNAV/VNAV DA		1548-1 ³ / ₄	518 (600-1 ³ / ₄)	NA
LNAV MDA	1480-1	450 (500-1)	1480-1 ³ / ₈ 450 (500-1 ³ / ₈)	NA
CIRCLING	1620-1	589 (600-1)	1640-1 ³ / ₄ 609 (700-1 ³ / ₄)	NA

MIRL Rwy 5-23
REIL Rws 5 and 23