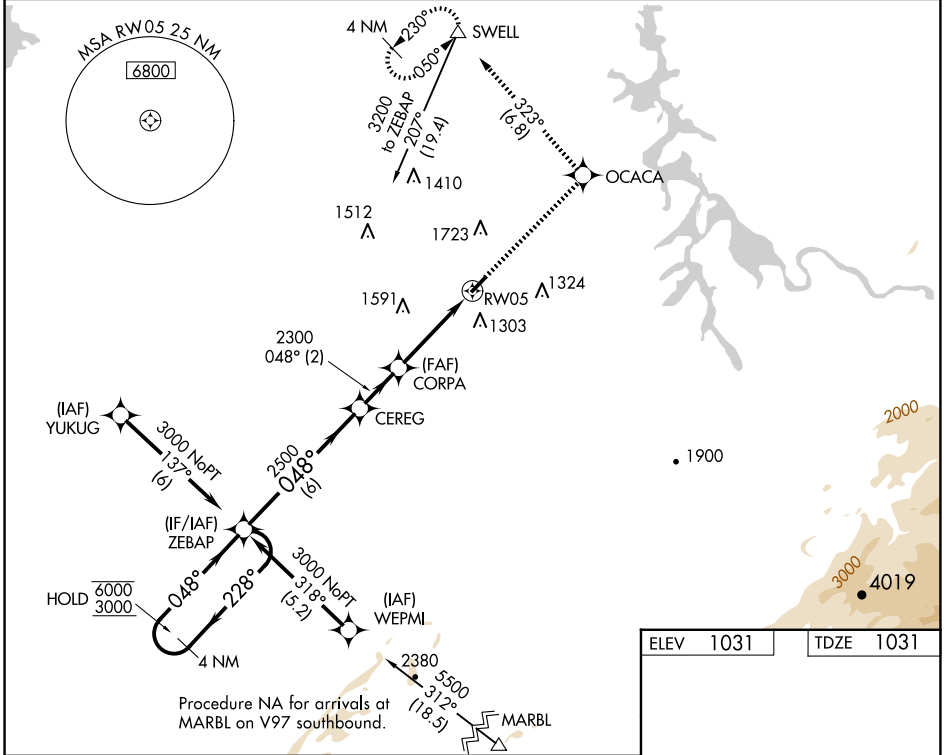


WAAS CH 99531	APP CRS 048°	Rwy Idg TDZE Apt Elev	3643 1031 1031
W05A			

RNAV (GPS) RWY 5

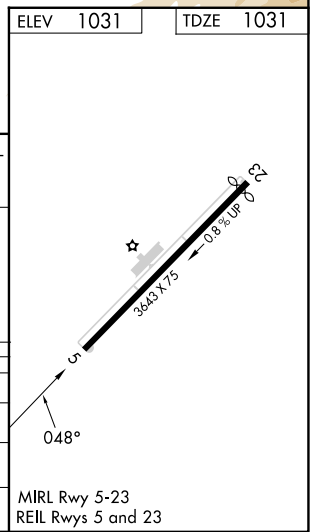
MONROE COUNTY (MNV)

RNP APCH - GPS.		MISSED APPROACH: Climb to 3200 direct OCACA and on track 323° to SWELL and hold.
⚠️ Circling NA NW of Rwy 5-23. Procedure NA at night. Rwy 5 helicopter visibility reduction below 1 SM NA. For uncompensated Baro-VNAV systems, LNAV/VNAV NA below -17°C or above 54°C.		
AWOS-3 118.475	KNOXVILLE APP CON 123.9 353.6	UNICOM 123.0 (CTAF)



SE-1, 17 APR 2025 to 15 MAY 2025

SE-1, 17 APR 2025 to 15 MAY 2025



4 NM Holding Pattern	ZEBAP	CEREG	CORPA	RW05
6000 ← 228°	048°	2500	2300	
3000 → 048°				
GP 3.00° TCH 53				
	6 NM	2 NM	3.8 NM	
CATEGORY	A	B	C	D
LPV DA	1395-1 364 (400-1)			NA
LNAV/VNAV DA	1538-1 507 (600-1)			NA
LNAV MDA	1680-1 649 (700-1)	1680-1 649 (700-1)		NA
C CIRCLING	1680-1 649 (700-1)	1680-1 649 (700-1)		NA