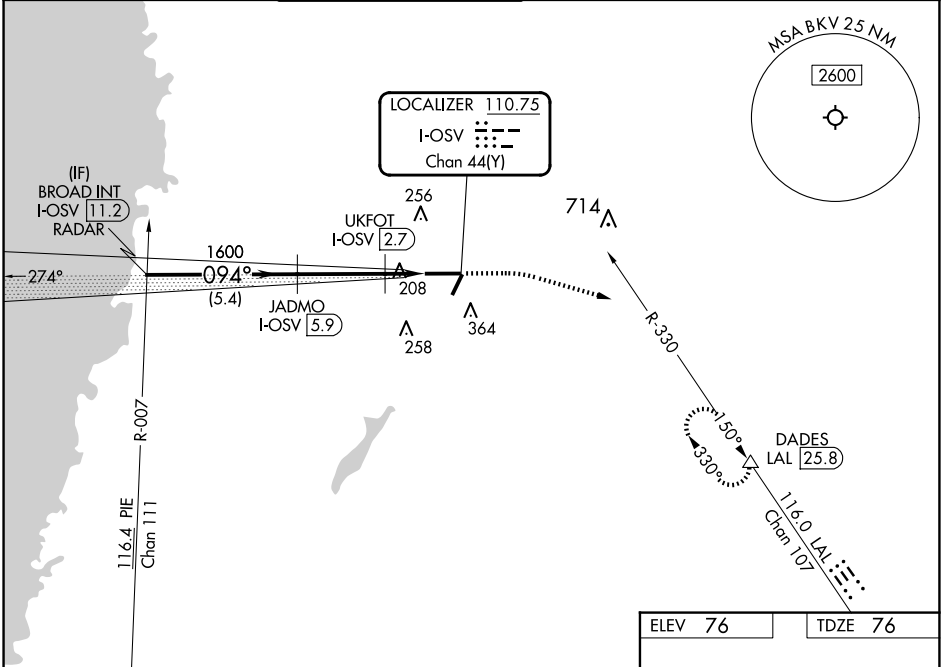


LOC/DME I-OSV <b>110.75</b> Chan 44(Y)	APP CRS <b>094°</b>	Rwy Idg <b>7001</b> TDZE <b>76</b> Apt Elev <b>76</b>
--	------------------------	---

# ILS or LOC RWY 9

BROOKSVILLE-TAMPA BAY RGNL (BKV)

RADAR required for procedure entry. DME required.		MALSR 	MISSED APPROACH: Climb to 500 then climbing right turn to 3000 on heading 110° and LAL VORTAC R-330 to DADES/LAL 25.8 DME and hold, continue climb-in-hold to 3000.					
	Circling Rwy 3 NA at night.		ASOS <b>134.725</b>	TAMPA APP CON <b>125.3 316.05</b>	BROOKSVILLE TOWER ★ <b>118.55</b> (CTAF)	GND CON <b>121.4</b>	CLNC DEL <b>119.125</b> (When twr closed)	UNICOM <b>123.0</b>



SE-3, 17 APR 2025 to 15 MAY 2025

SE-3, 17 APR 2025 to 15 MAY 2025

		ELEV 76	TDZE 76		
BROAD INT I-OSV [11.2] RADAR		500	3000	LAL R-330	DADES △
GS 3.00° TCH 56		hdg 110°			
2000		1600		600	
094°		1600		600	
5.4 NM		3.1 NM		1.5 NM	
CATEGORY	A	B	C	D	
S-ILS 9	276-1/2		200 (200-1/2)		
S-LOC 9	460-1/2 384 (400-1/2)		460-5/8 384 (400-5/8)		
CIRCLING	680-1 604 (700-1)		680-1 3/4 604 (700-1 3/4)		760-2 1/4 684 (700-2 1/4)
MIRL Rwy 3-21 and 9-27					