

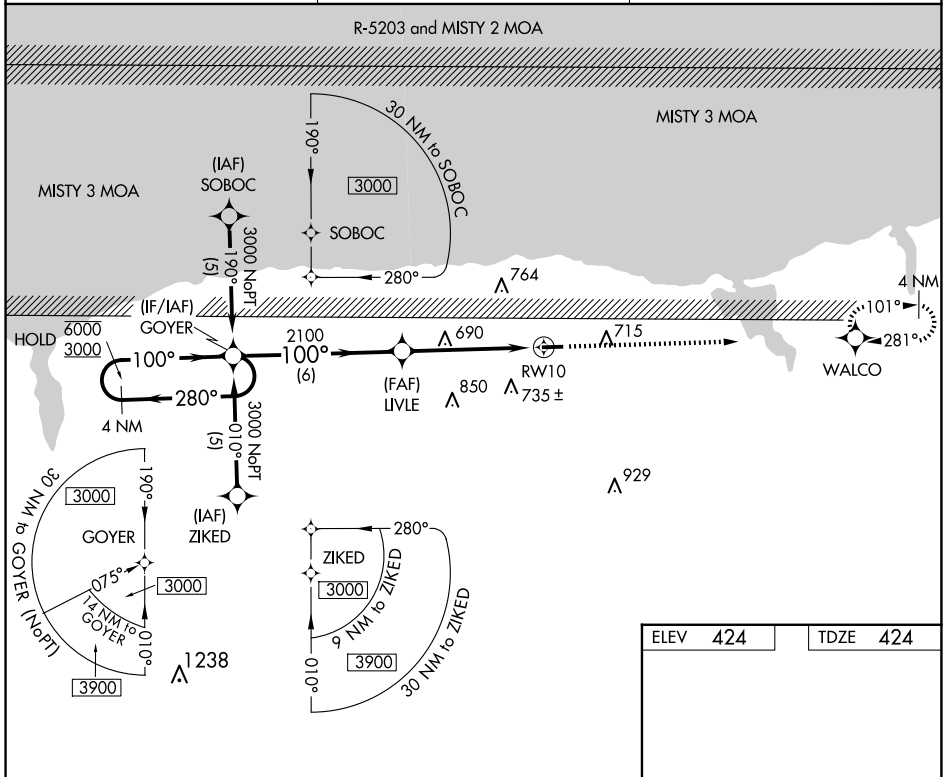
APP CRS	Rwy Idg	3803
100°	TDZE	424
	Apr Elev	424

RNAV (GPS) RWY 10

WILLIAMSON/SODUS (SDC)

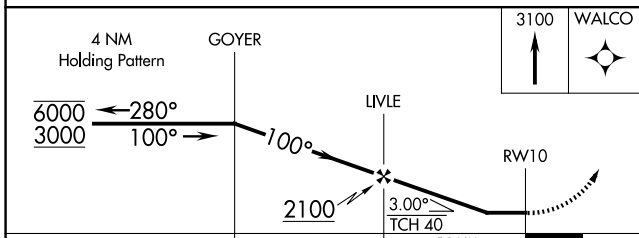
RNP APCH - GPS.	MISSED APPROACH: Climb to 3100 direct WALCO and hold. Continue climb-in-hold to 3100.
<p>▼ Procedure NA at night. Rwy 10 helicopter visibility reduction below 1 SM NA.</p> <p>▲ When local altimeter setting not received, use Rochester altimeter setting and increase all MDAs 80 feet and LNAV visibility Cat C ¾ SM, and Circling visibility Cat C ¼ SM.</p>	

AWOS-3 124.2	ROCHESTER APP CON 119.55 269.6	UNICOM 122.8 (CTAF) 0
------------------------	--	---------------------------------

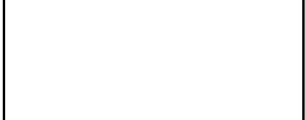


NE-2, 17 APR 2025 to 15 MAY 2025

NE-2, 17 APR 2025 to 15 MAY 2025



ELEV	424	TDZE	424
------	------------	------	------------



CATEGORY	A	B	C	D
LNAV MDA	940-1	516 (600-1)	940-1 3/8 516 (600-1 3/8)	NA
CIRCLING	1000-1 576 (600-1)	1020-1 596 (600-1)	1120-2 696 (700-2)	NA

MIRL Rwy 10-28 0

REIL Rwy 10 and 28 0