

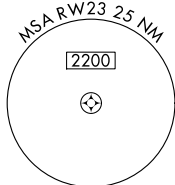
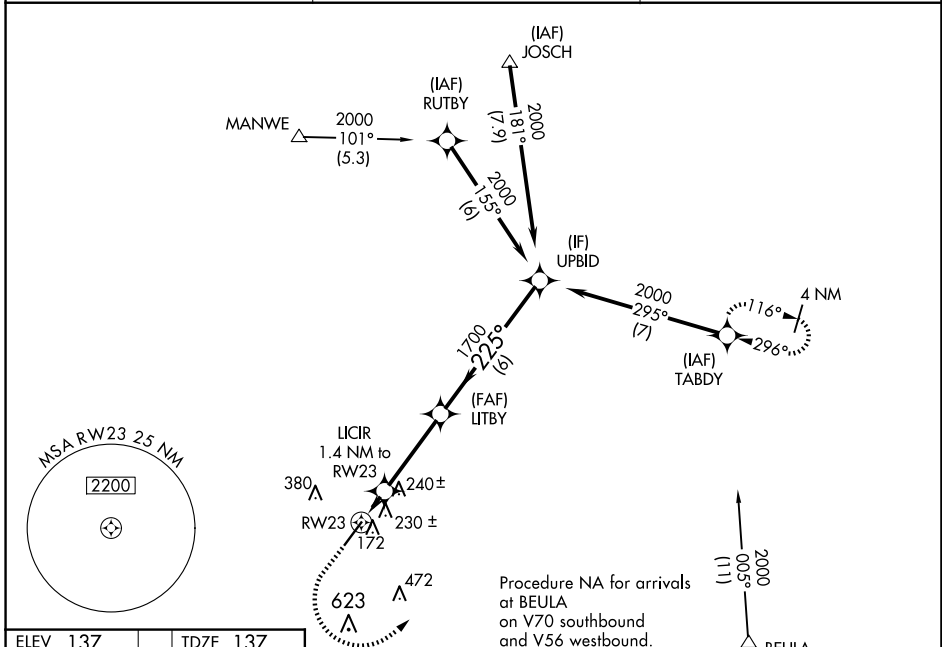
WAAS CH <b>69521</b> <b>W23A</b>	APP CRS <b>225°</b>	Rwy Idg TDZE Apt Elev	<b>6003</b> <b>137</b> <b>137</b>
--	------------------------	-----------------------------	---

# RNAV (GPS) RWY 23

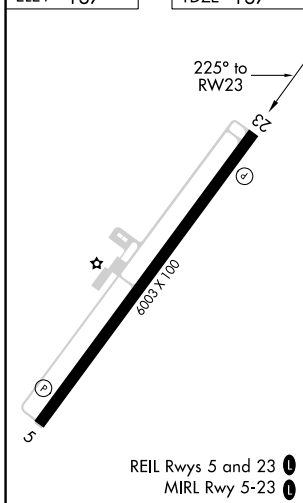
DUPLIN COUNTY (DPL)

RNP APCH.	MISSED APPROACH: Climb to 1000 then climbing left turn to 2000 direct TABDY and hold.
<p>⚠ For uncompensated Baro-VNAV systems, LNAV/VNAV NA below -15°C or above 54°C.</p>	

AWOS-3 <b>120.675</b>	SEYMOUR JOHNSON APP CON★ <b>119.7 273.6</b>	UNICOM <b>123.0 (CTAF) ①</b>
--------------------------	--	---------------------------------



ELEV 137	TDZE 137
----------	----------



1000	2000	TABDY				
*LNAV only.		LITBY	UPBID			
RW23		LICIR 1.4 NM to RW23	1700	225°	2000	GP 3.00° TCH 43
*620			1700			
-1.4 NM		3.4 NM	6 NM			
CATEGORY	A	B	C	D		
LPV DA	DA	337- <sup>3</sup> / <sub>4</sub>	200 (200- <sup>3</sup> / <sub>4</sub> )			
LNAV/VNAV DA	DA	407- <sup>7</sup> / <sub>8</sub>	270 (300- <sup>7</sup> / <sub>8</sub> )			
LNAV MDA	MDA	480-1	343 (400-1)			

SE-2, 17 APR 2025 to 15 MAY 2025

SE-2, 17 APR 2025 to 15 MAY 2025