

APP CRS	Rwy Idg	<b>3199</b>
<b>275°</b>	TDZE	<b>919</b>
	Apt Elev	<b>920</b>

# RNAV (GPS) RWY 27

PRICES (9G2)

RNP APCH.

Use Flint altimeter setting; when not received, use Howell altimeter setting.  
 Procedure NA at night. Rwy 27 helicopter visibility reduction below 1 SM NA.

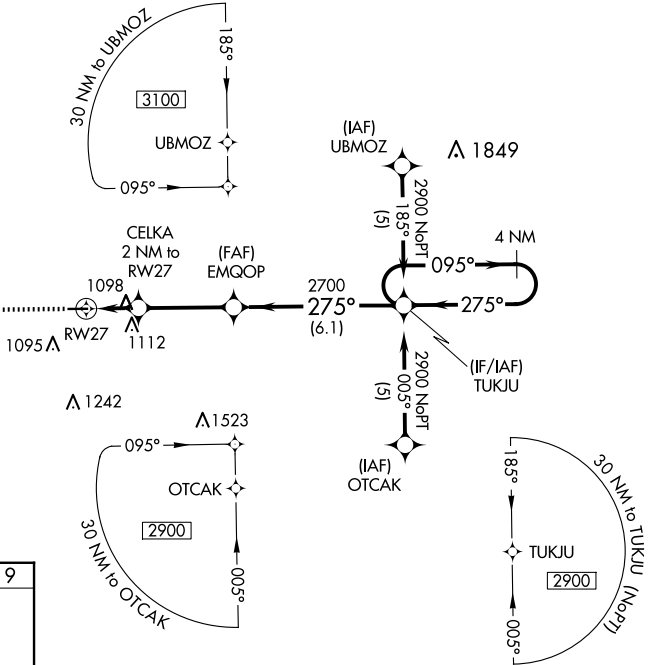
MISSED APPROACH: Climb to 3100 direct OQONI and hold.

FNT ASOS  
**133.15**

GREAT LAKES APP CON ★  
**128.55 257.9**

UNICOM  
**123.0 (CTAF) 0**

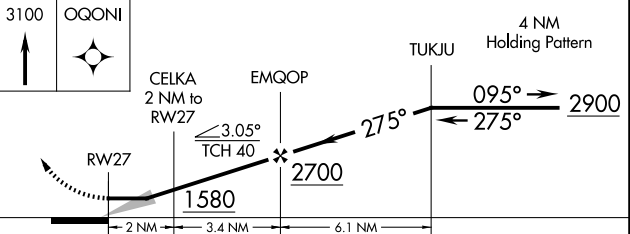
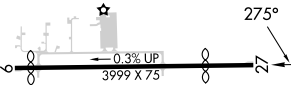
MISSED APCH FIX



EC-1, 17 APR 2025 to 15 MAY 2025

EC-1, 17 APR 2025 to 15 MAY 2025

ELEV 920	TDZE 919
----------	----------



REIL Rwy 9 0  
 MIRL Rwy 9-27 0

CATEGORY	A	B	C	D
LNAV MDA	1400-1 481 (500-1)			NA