

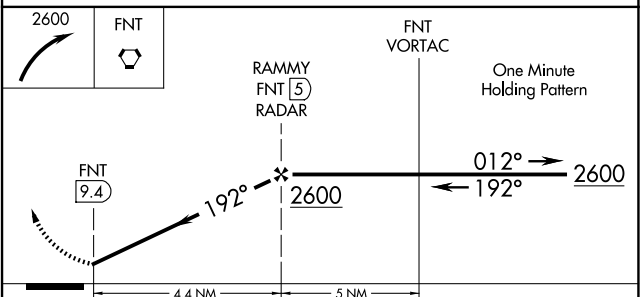
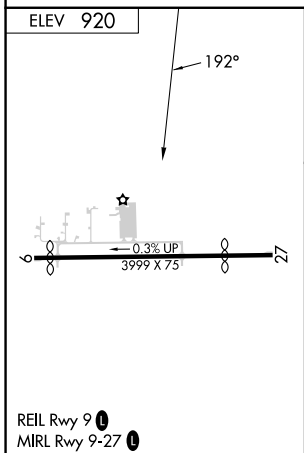
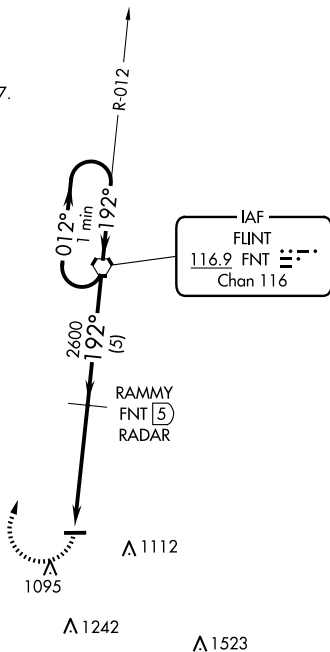
VORTAC FNT <b>116.9</b> Chan <b>116</b>	APP CRS <b>192°</b>	Rwy Idg TDZE Apt Elev <b>N/A</b> <b>N/A</b> <b>920</b>
---	------------------------	---

**VOR-A**  
PRICES (9G2)

DME or RADAR required.		MISSED APPROACH: Climbing right turn to 2600 direct FNT VORTAC and hold.
▼ Use Flint altimeter setting; when not received, use Howell altimeter setting.	▲ NA Procedure NA at night.	

FNT ASOS <b>133.15</b>	GREAT LAKES APP CON ★ <b>128.55 257.9</b>	UNICOM <b>123.0</b> (CTAF) 0
---------------------------	--	---------------------------------

NoPT for arrivals on  
FNT VORTAC  
airway radials 286 CW 097.



FAF to MAP 4.4 NM					CATEGORY	A	B	C	D
Knots	60	90	120	150	180	CIRCLING			
Min:Sec	4:24	2:56	2:12	1:46	1:28	1460-1 540 (600-1)			
						NA			