

VORTAC OKW <b>111.0</b> Chan 47	APP CRS <b>076°</b>	Rwy Idg TDZE <b>700</b> Apt Elev <b>700</b>	<b>6007</b>
---------------------------------------	------------------------	---------------------------------------------------	-------------

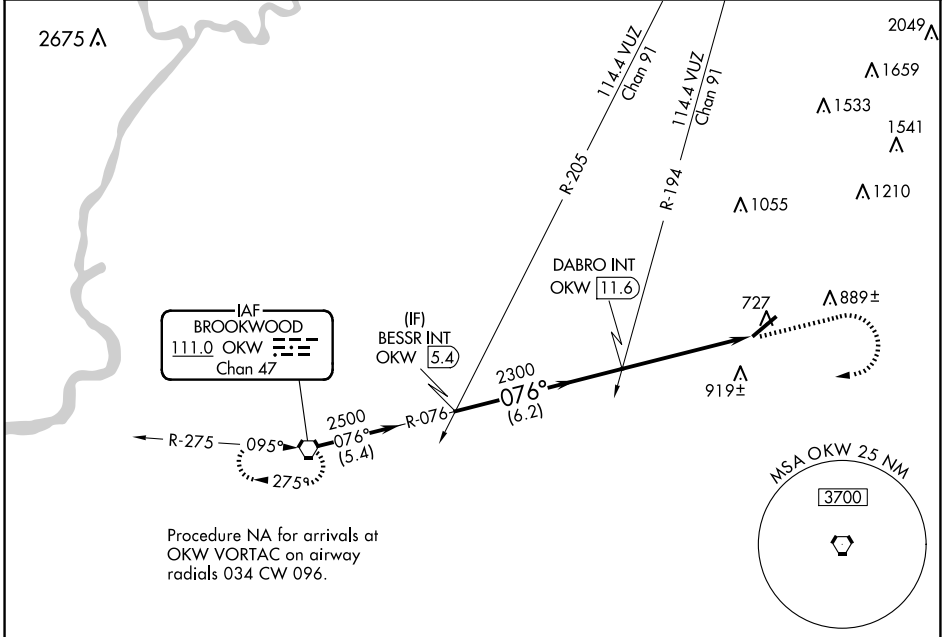
# VOR RWY 5

BESSEMER (EKY)

**NA** Inoperative table does not apply. When local altimeter setting not received, use Alabaster altimeter setting and increase all MDAs 60 feet; increase S-5 Cat C visibility  $\frac{1}{8}$  SM and Circling Cat D visibility  $\frac{1}{4}$  SM.

MISSED APPROACH: Climb to 1500 then climbing right turn to 3000 direct OKW VORTAC and hold.

AWOS-3PT <b>118.825</b>	BIRMINGHAM APP CON <b>124.9 351.85</b>	CLNC DEL <b>123.75</b>	UNICOM <b>123.0 (CTAF)</b>
----------------------------	-------------------------------------------	---------------------------	-------------------------------



Procedure NA for arrivals at OKW VORTAC on airway radials 034 CW 096.

SE-4, 17 APR 2025 to 15 MAY 2025

SE-4, 17 APR 2025 to 15 MAY 2025

