

WAAS CH <b>82133</b> <b>W13A</b>	APP CRS <b>127°</b>	Rwy Idg <b>5003</b> TDZE <b>598</b> Apt Elev <b>598</b>
--	------------------------	---

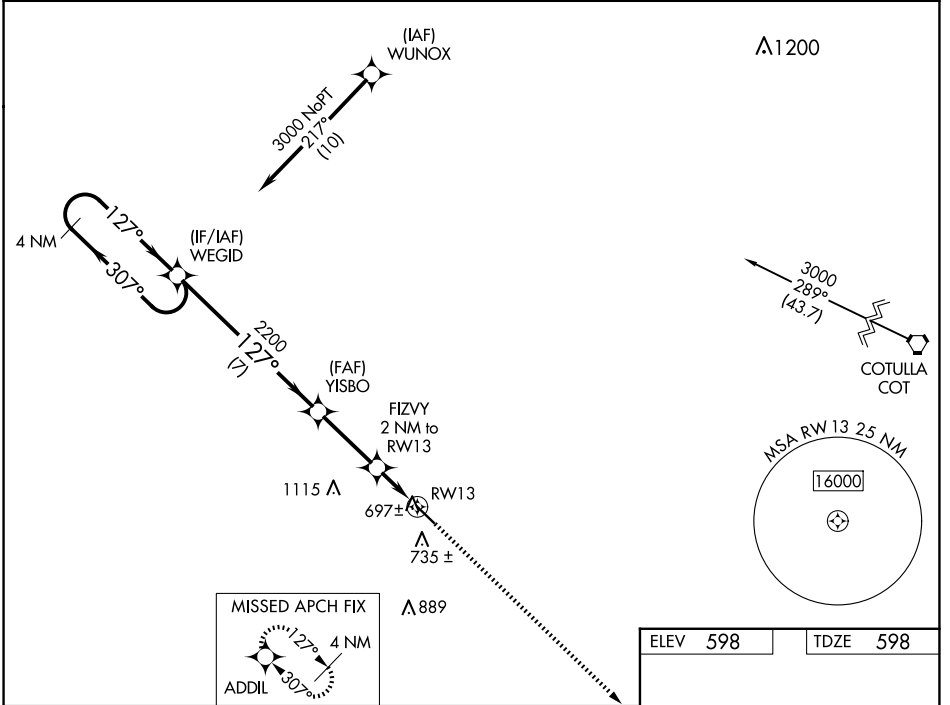
# RNAV (GPS) RWY 13

DIMIT COUNTY (CZT)

**Baro-VNAV NA. DME/DME RNP-0.3 NA. Use Cotulla altimeter setting; when not received use Uvalde altimeter setting and increase all DA 52 feet, all MDA 60 feet and increase LPV all Cats, LNAV/VNAV all Cats, and Circling Cat C visibility 1/4 mile. Helicopter visibility reduction below 3/4 SM NA.**

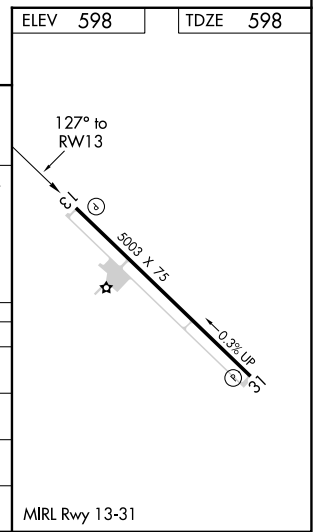
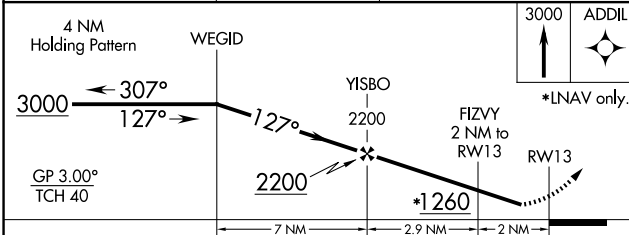
**MISSED APPROACH:** Climb to 3000 direct ADDIL and hold.

AWOS-3 <b>119.625</b>	COT ASOS <b>118.325</b>	HOUSTON CENTER <b>127.8 307.2</b>	UNICOM <b>122.8</b> (CTAF)
--------------------------	----------------------------	--------------------------------------	-------------------------------



SC-3, 17 APR 2025 to 15 MAY 2025

SC-3, 17 APR 2025 to 15 MAY 2025



CATEGORY	A	B	C	D
LPV DA	940-1 1/8	342 (400-1 1/8)		NA
LNAV/VNAV DA	940-1 1/8	342 (400-1 1/8)		NA
LNAV MDA	1040-1	442 (500-1)	1040-1 1/8 442 (500-1 3/8)	NA
<b>CIRCLING</b>	1160-1 562 (600-1)	1240-1 642 (700-1)	1500-2 3/4 902 (1000-2 3/4)	NA