

WAAS CH 50433 W31A	APP CRS 307°	Rwy Idg TDZE 5003 589 Apt Elev 598
--	------------------------	--

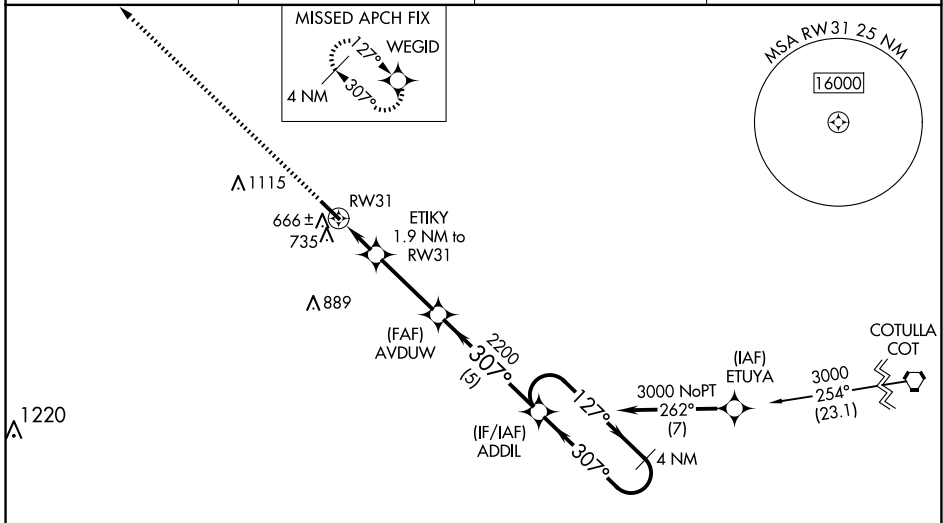
RNAV (GPS) RWY 31

DIMIT COUNTY (CZT)

NA Baro-VNAV NA. DME/DME RNP-0.3 NA. Use Cotulla altimeter setting; when not received use Uvalde altimeter setting and increase all DA 52 feet, all MDA 60 feet and increase LPV all Cats, LNAV/VNAV all Cats, and Circling Cat C visibility ¼ mile. Helicopter visibility reduction below ¾ SM NA.

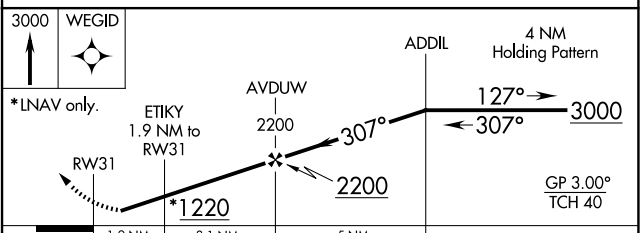
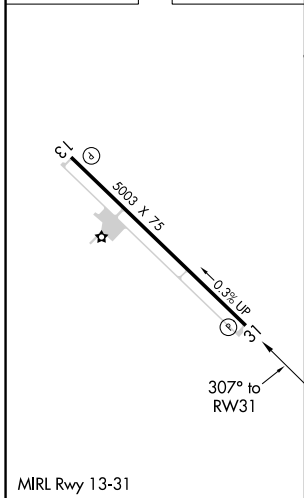
MISSED APPROACH: Climb to 3000 direct WEGID and hold.

AWOS-3 119.625	COT ASOS 118.325	HOUSTON CENTER 127.8 307.2	UNICOM 122.8 (CTAF)
--------------------------	----------------------------	--------------------------------------	-------------------------------



Procedure NA for arrivals at COT VORTAC on V17 northbound.

ELEV 598	TDZE 589
-----------------	-----------------



CATEGORY	A	B	C	D
LPV DA	931-1½	342 (400-1½)		NA
LNAV/VNAV DA	931-1½	342 (400-1½)		NA
LNAV MDA	1040-1	451 (500-1)	1040-1¾ 451 (500-1¾)	NA
<input checked="" type="checkbox"/> CIRCLING	1160-1 562 (600-1)	1240-1 642 (700-1)	1500-2¾ 902 (1000-2¾)	NA

SC-3, 17 APR 2025 to 15 MAY 2025

SC-3, 17 APR 2025 to 15 MAY 2025