

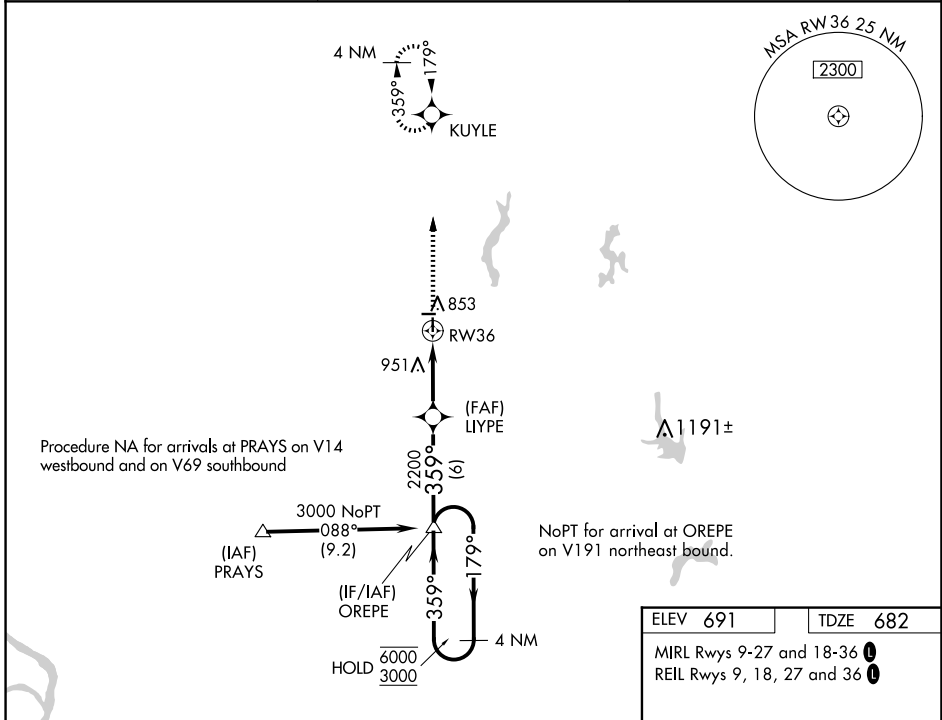
WAAS CH 40403 W36A	APP CRS 359°	Rwy Idg 4002 TDZE 682 Apt Elev 691
--	------------------------	---

RNAV (GPS) RWY 36

LITCHFIELD MUNI (3LF)

RNP APCH - GPS.	<p>MISSED APPROACH: Climb to 3000 direct KUYLE and hold.</p>
<p>Baro-VNAV and VDP NA when using Taylorville altimeter setting. For uncompensated Baro-VNAV systems, LNAV/VNAV NA below -16°C or above 54°C. When local altimeter setting not received, use Taylorville altimeter setting and increase LPV DA to 1005 feet and all visibilities ¼ SM, increase LNAV/VNAV DA to 1145 and all visibilities ¼ SM; increase all MDAs 80 feet and increase LNAV Cat C visibility ½ SM.</p>	

AWOS-3PT 118.175	ST. LOUIS APP CON 124.2 353.9	UNICOM 122.8 (CTAF) 0
----------------------------	---	---------------------------------

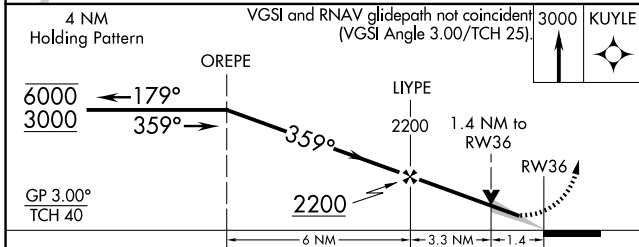
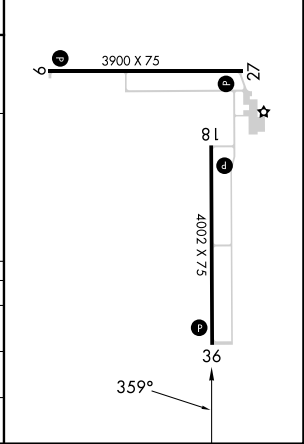


Procedure NA for arrivals at PRAYS on V14 westbound and on V69 southbound

NoPT for arrival at OREPE on V191 northeast bound.

ELEV 691	TDZE 682
----------	----------

MIRL Rwy 9-27 and 18-36
REIL Rwy 9, 18, 27 and 36



CATEGORY	A	B	C	D
LPV DA	932-3/4 250 (300-3/4)			NA
LNAV/VNAV DA	1072-1 1/8 390 (400-1 1/8)			NA
LNAV MDA	1140-1 458 (500-1)		1140-1 3/8 458 (500-1 3/8)	