

# RNAV (GPS) RWY 18

|          |            |      |
|----------|------------|------|
| APCH CRS | Rwy Idg    | 6142 |
| 161°     | TDZE       | 410  |
|          | Arprt Elev | 433  |

[USA]

LAGUNA AAF (KLGf)

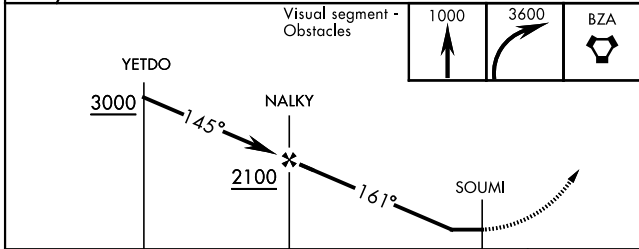
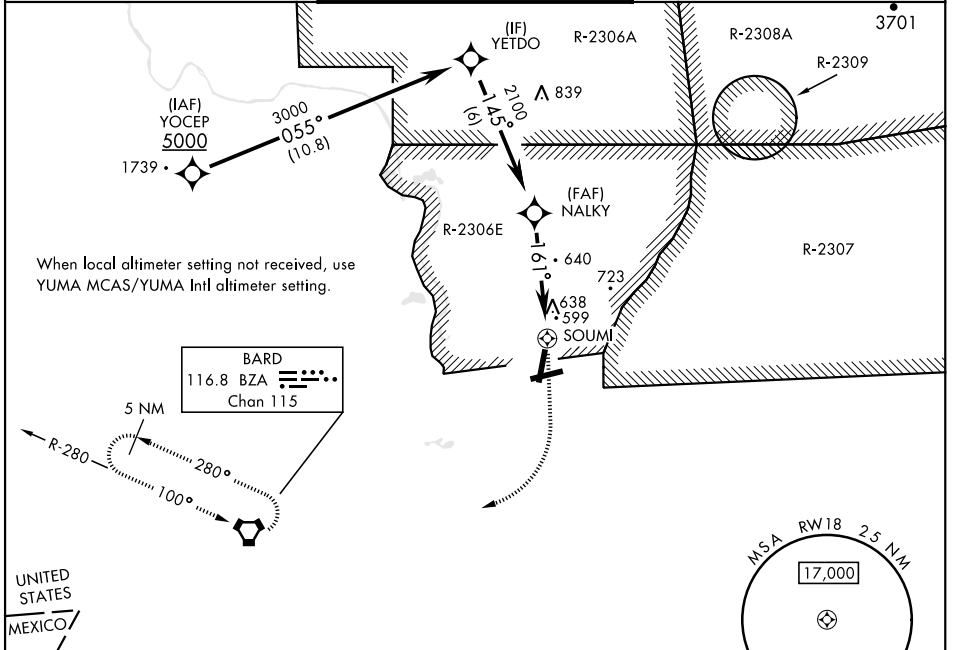
RNP APCH - GPS

RADAR required for holding.

- ▼ Procedure not authorized when airfield closed.
- \* Circling to Rwy 24 not authorized at night.
- ▲ NA Circling not authorized NW of Rwy 6 and 18.

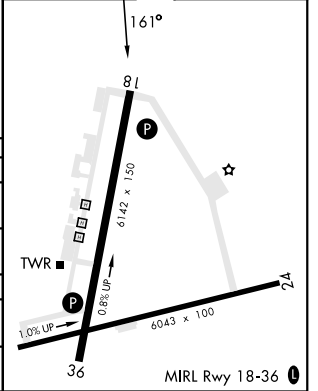
MISSED APPROACH: Climb to 1000, then climbing right turn to 3600 direct BZA VORTAC and hold, continue climbing in hold to 3600.

|               |                      |             |
|---------------|----------------------|-------------|
| YUMA APP CON  | TOWER ★              | GND CON     |
| 124.7 371.975 | 126.2 (CTAF) 242.175 | 121.8 229.4 |



|      |     |      |     |
|------|-----|------|-----|
| ELEV | 433 | TDZE | 410 |
|------|-----|------|-----|

| CATEGORY                              | A                    | B                     | C                             | D                                  |
|---------------------------------------|----------------------|-----------------------|-------------------------------|------------------------------------|
| LNAV MDA                              | 900-1<br>467 (500-1) | 490 (500-1)           | 900-1 3/8<br>507 (600-1 1/2)  | 490 (500-1 1/8)<br>607 (700-2)     |
| CIRCLING *                            | 900-1<br>547 (600-1) | 940-1<br>587 (600-1)  | 940-1 1/2<br>587 (600-1 1/8)  | 1040-2<br>687 (700-2 1/4)          |
| YUMA MCAS/YUMA Intl ALTIMETER SETTING |                      |                       |                               |                                    |
| LNAV MDA                              | 980-1<br>547 (600-1) | 570 (600-1)           | 980-1 5/8<br>587 (600-1 1/8)  | 570 (600-1 1/8)<br>687 (700-2 1/4) |
| CIRCLING *                            | 980-1<br>547 (600-1) | 1020-1<br>587 (600-1) | 1020-1 5/8<br>587 (600-1 1/8) | 1120-2 1/4<br>687 (700-2 1/4)      |



# RNAV (GPS) RWY 18

SW-4, 17 APR 2025 to 15 MAY 2025

SW-4, 17 APR 2025 to 15 MAY 2025