

# RNAV (GPS) RWY 6

APCH CRS	Rwy Idg	6043
063°	TDZE	387
	Arprt Elev	433

[USA]

LAGUNA AAF (KLGf)

RNP APCH - GPS

RADAR required for holding.

- Procedure not authorized when airfield closed.
- \* Straight-in Minimums not authorized at night.
- \*\* Circling not authorized NW of Rwys 6 and 18.
- Circling to Rwy 24 not authorized at night.

MISSED APPROACH: Climbing right turn to 3600 direct BZA VORTAC and hold.

NA

YUMA APP CON  
124.7 371.975

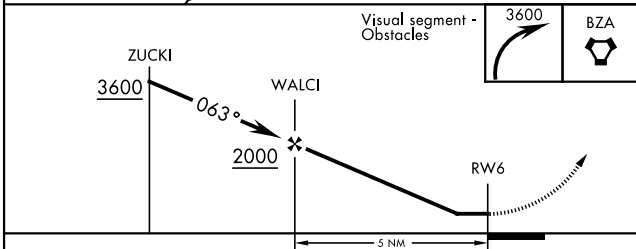
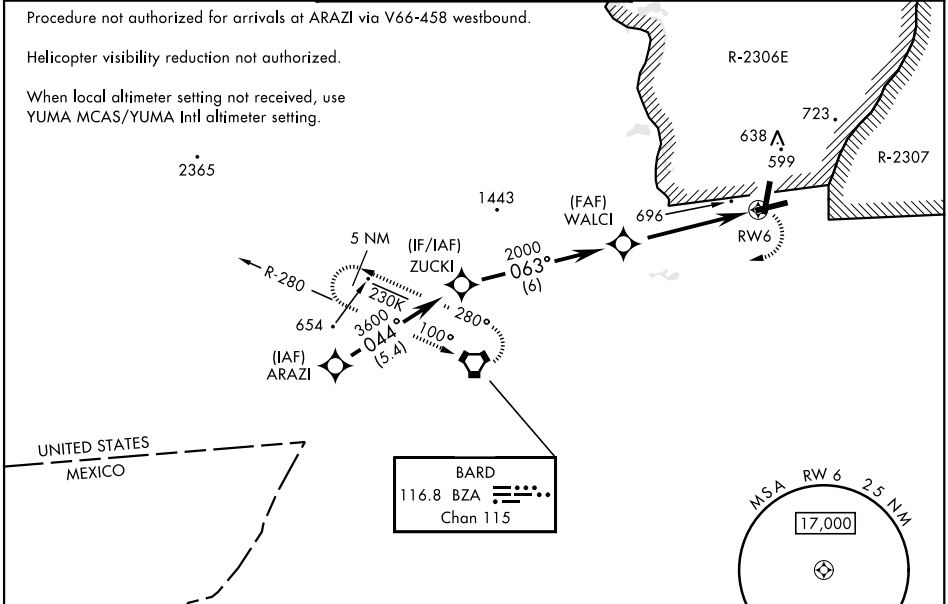
TOWER ★  
126.2 (CTAF) 242.175

GND CON  
121.8 229.4

Procedure not authorized for arrivals at ARAZI via V66-458 westbound.

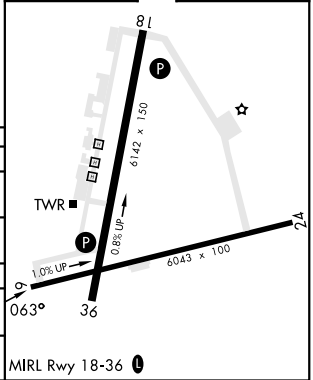
Helicopter visibility reduction not authorized.

When local altimeter setting not received, use YUMA MCAS/YUMA Intl altimeter setting.



ELEV	433	TDZE	387
------	-----	------	-----

CATEGORY	A	B	C	D
LNVA MDA*	1020-1 633 (600-1)	1020-1¾ 633 (600-1¾)		
CIRCLING**	1080-1 647 (700-1)	1080-1¾ 647 (700-1¾)	1080-2 647 (700-2)	
YUMA MCAS/YUMA Intl ALTIMETER SETTING				
LNVA MDA*	1100-1 713 (700-1)	1100-2 713 (700-2)		
CIRCLING**	1160-1 727 (800-1)	1160-2 727 (800-2)	1160-2¼ 727 (800-2¼)	



# RNAV (GPS) RWY 6

SW-4, 17 APR 2025 to 15 MAY 2025

SW-4, 17 APR 2025 to 15 MAY 2025