

VORTAC HLV 114.2 Chan 89	APP CRS 154°	Rwy Idg TDZE Apt Elev 887	N/A N/A 887
--	------------------------	-------------------------------------	--

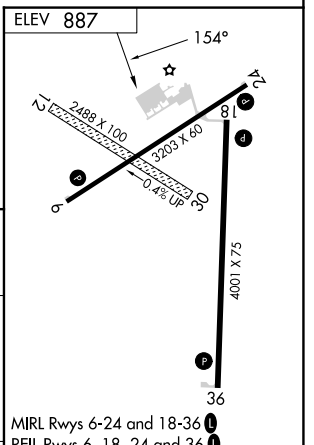
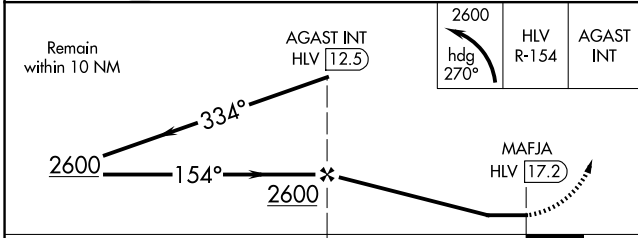
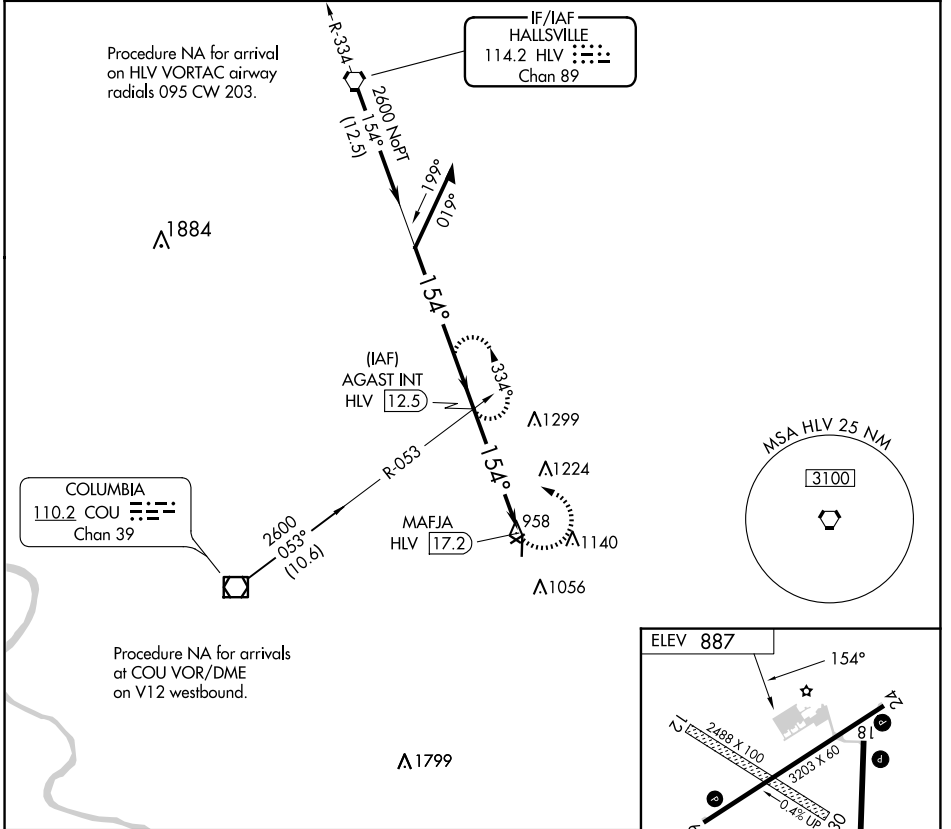
VOR-A

ELTON HENSLEY MEML (F'TT)

▽ Circling NA to Rwys 12 and 30. Circling Rwy 18, 24 NA at night.
△ NA Use Columbia altimeter setting; when not received use Jefferson City altimeter setting and increase all MDA 80 feet, and Circling Cat C visibility ¼ SM.

MISSED APPROACH: Climbing left turn to 2600 on heading 270° and HLV VORTAC R-154 to AGAST INT/12.5 DME and hold.

COU ASOS 128.45	MIZZU APP CON 124,375 353,925	UNICOM 122.7 (CTAF)
---------------------------	---	-------------------------------



MIRL Rwys 6-24 and 18-36	1
REIL Rwys 6, 18, 24 and 36	1
FAF to MAP 4.7 NM	
Knots	60 90 120 150 180
Min:Sec	4:42 3:08 2:21 1:53 1:34

CATEGORY	A	B	C	D
C CIRCLING	1520-1 633 (700-1)		1560-2 673 (700-2)	NA

VOR-A

NC-3, 17 APR 2025 to 15 MAY 2025

NC-3, 17 APR 2025 to 15 MAY 2025