

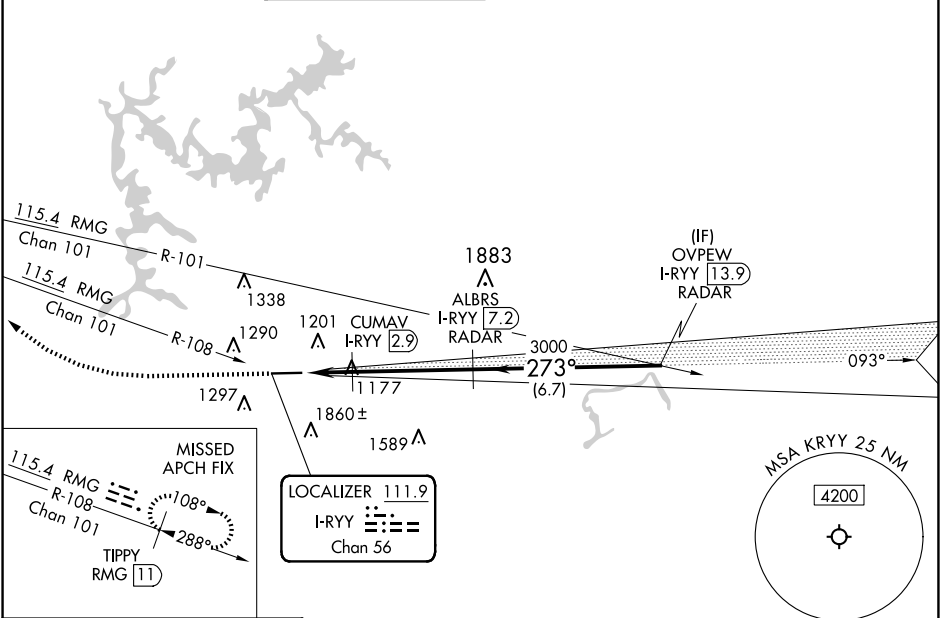
LOC/DME I-RYY <b>111.9</b> Chan <b>56</b>	APP CRS <b>273°</b>	Rwy Idg TDZE Apt Elev	<b>5374</b> <b>1011</b> <b>1040</b>
---	------------------------	-----------------------------	---

# ILS or LOC RWY 27

COBB COUNTY INTL/MCCOLLUM FLD (RYY)

DME required. RADAR required for procedure entry.		MALSF 	MISSED APPROACH: Climb to 1600 then climbing right turn to 3500 on heading 300° and on RMG VORTAC R-108 to TIPPY/RMG 11 DME and hold.
Inop table does not apply to S-ILS 27.			

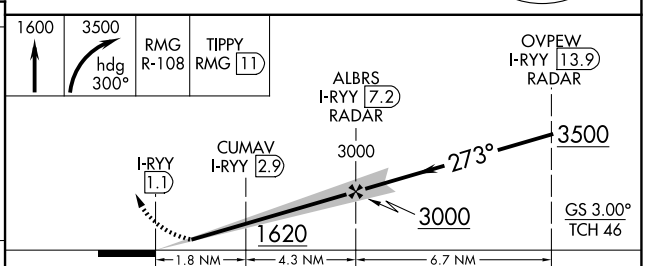
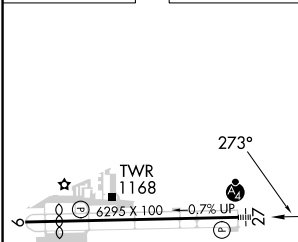
ATIS <b>128.125</b>	ATLANTA APP CON <b>121.0 268.7</b>	MCCOLLUM TOWER ★ <b>125.9 (CTAF) 0</b>	GND CON <b>119.0</b>	CLNC DEL <b>119.0</b>	CLNC DEL <b>121.0 268.7</b> (When twr closed)	UNICOM <b>122.7</b>
------------------------	---------------------------------------	---	-------------------------	--------------------------	---	------------------------



SE-4, 17 APR 2025 to 15 MAY 2025

SE-4, 17 APR 2025 to 15 MAY 2025

ELEV 1040	<b>D</b>	TDZE 1011
-----------	----------	-----------



CATEGORY	A	B	C	D
S-ILS 27	1211-3/4 200 (200-3/4)			
S-LOC 27	1620-3/4	609 (600-3/4)	1620-1/2	609 (600-1/2)
<b>C</b> CIRCLING	1800-1	760 (800-1)	2180-3	1140 (1200-3)
CUMAV FIX MINIMUMS				
S-LOC 27	1480-3/4	469 (500-3/4)	1480-1 1/8	469 (500-1 1/8)
<b>C</b> CIRCLING	1800-1	760 (800-1)	2180-3	1140 (1200-3)

HIRL Rwy 9-27 **0**

FAF to MAP 6.1 NM

Knots	60	90	120	150	180
Min:Sec	6:06	4:04	3:03	2:26	2:02