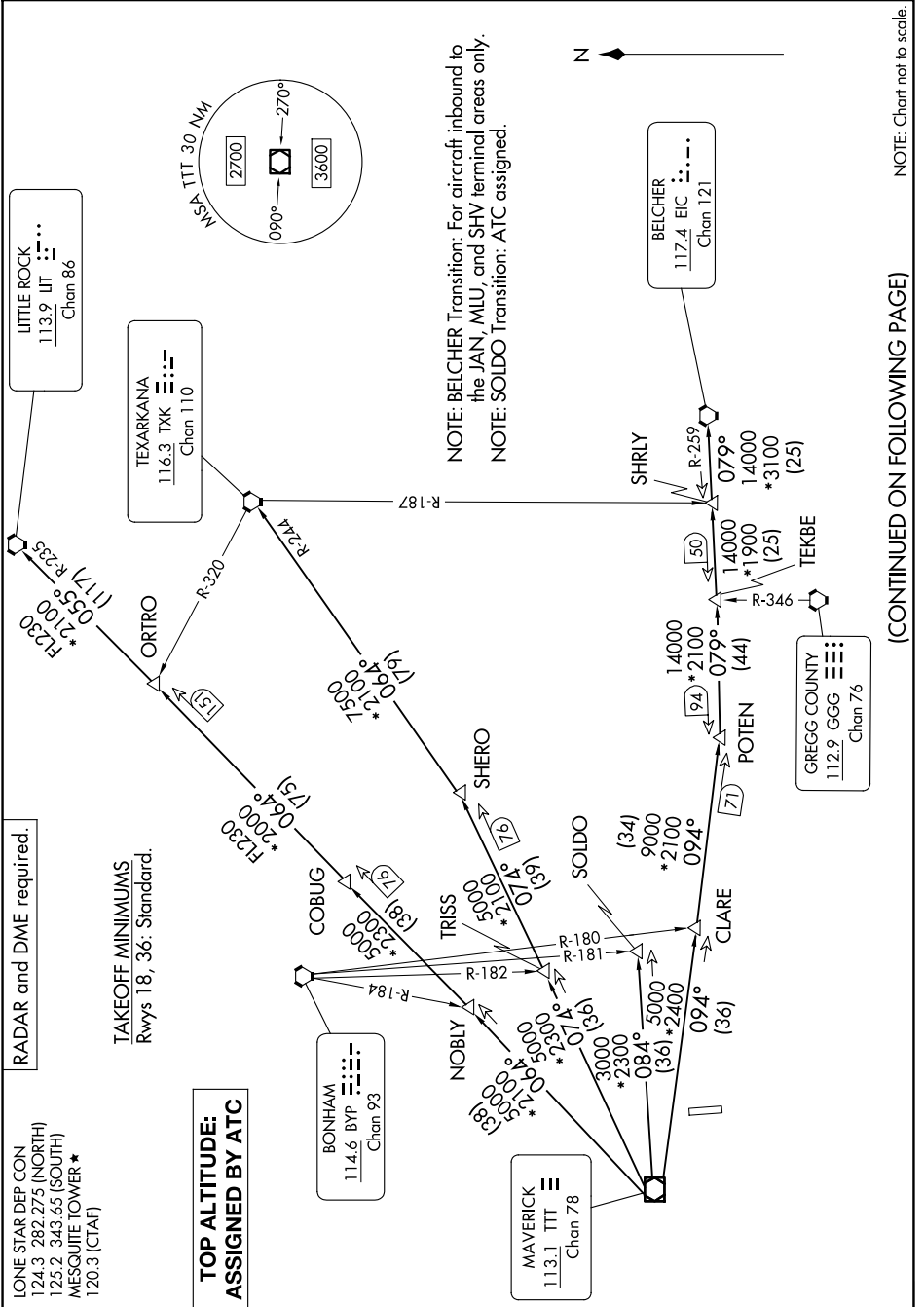


DALLAS THREE DEPARTURE

MESQUITE, TEXAS

SC-2, 17 APR 2025 to 15 MAY 2025



RADAR and DME required.

LONE STAR DEP CON
124.3 282.275 (NORTH)
125.2 343.65 (SOUTH)
MESQUITE TOWER *
120.3 (CTAF)

TAKEOFF MINIMUMS
Rwys 18, 36: Standard.

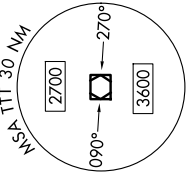
**TOP ALTITUDE:
ASSIGNED BY ATC**

BONHAM
114.6 BYP
Chan 93

MAVERICK
113.1 TTT
Chan 78

TEXARKANA
116.3 TXK
Chan 110

LITTLE ROCK
113.9 UT
Chan 86



NOTE: BELCHER Transition: For aircraft inbound to the JAN, MLU, and SHV terminal areas only.
NOTE: SOLD0 Transition: ATC assigned.



BELCHER
117.4 EIC
Chan 121

GREGG COUNTY
112.9 GGG
Chan 76

(CONTINUED ON FOLLOWING PAGE)

NOTE: Chart not to scale.

SC-2, 17 APR 2025 to 15 MAY 2025

DALLAS THREE DEPARTURE

MESQUITE, TEXAS