

WAAS CH 58301 W 18A	APP CRS 178°	Rwy Idg 6000 TDZE 447 Apt Elev 447
---	------------------------	---

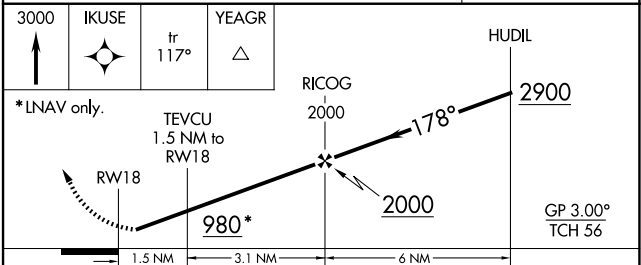
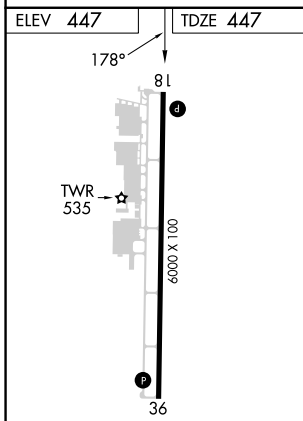
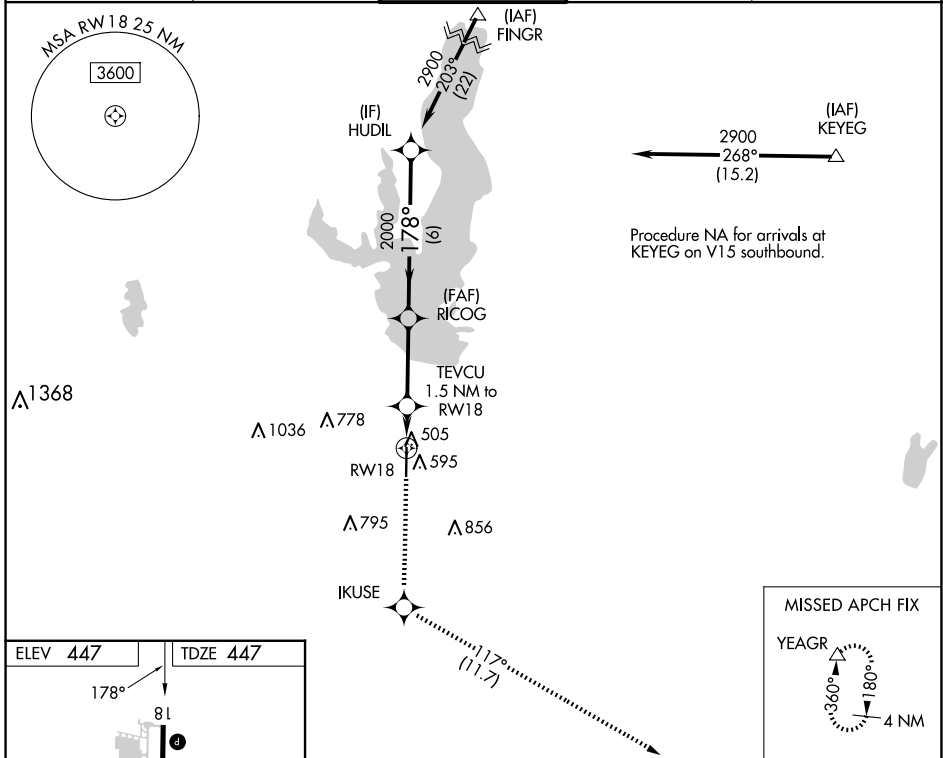
RNAV (GPS) RWY 18

MESQUITE METRO (HQZ)

⚠ DME/DME RNP-0.3 NA. When local altimeter setting not received, use Dallas Love Fld altimeter setting and increase all DA/MDA 60 feet. Increase LPV all Cats visibility to 1 mile, LNAV Cat C visibility to 1 3/8 and Circling Cat C visibility to 2 1/4. Helicopter visibility reduction below 3/4 SM NA.

MISSED APPROACH: Climb to 3000 direct IKUSE then on track 117° to YEAGR and hold.

AWOS-3 118.175	LONE STAR APP CON 125.2 343.65	MESQUITE TOWER★ 120.3 (CTAF) 0	GND CON 118.85	UNICOM 123.05
--------------------------	--	---	--------------------------	-------------------------



CATEGORY	A	B	C	D
LPV DA	697-3/4 250 (300-3/4)			NA
LNAV MDA	860-1	413 (500-1)	860-1 1/8 413 (500-1 1/8)	NA
C CIRCLING	960-1	513 (600-1)	1160-2 713 (800-2)	NA

MIRL Rwy 18-36 **0**
REIL Rwy 18 and 36 **0**
RLLS Rwy 18 and 36 **0**

SC-2, 17 APR 2025 to 15 MAY 2025

SC-2, 17 APR 2025 to 15 MAY 2025