

WAAS CH 53316 W35A	APP CRS 351°	Rwy Idg 5000 TDZE 5 Apt Elev 5
--	------------------------	---

RNAV (GPS) RWY 35

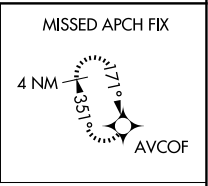
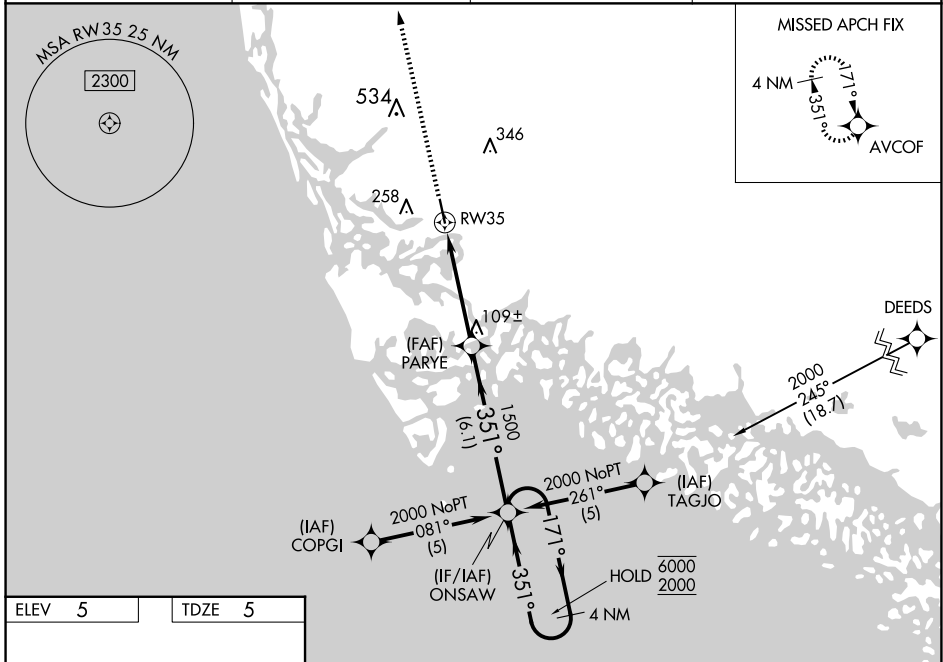
MARCO ISLAND EXEC (MKY)

RNP APCH-GPS.

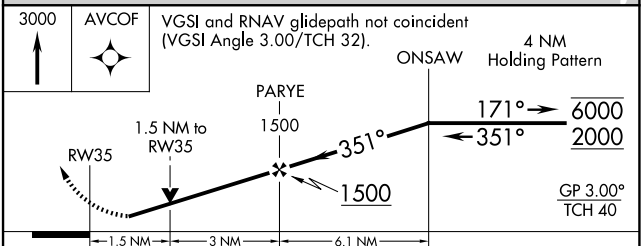
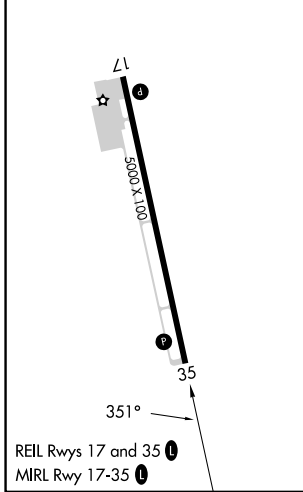
▼ Baro-VNAV and VDP NA when using APF altimeter setting. Rwy 35 helicopter visibility reduction below ¾ SM NA. For uncompensated Baro-VNAV systems, LNAV/VNAV NA below 2°C or above 54°C. When local altimeter setting not received, use APF altimeter setting and increase LPV DA to 312 feet; increase LNAV/VNAV DA to 420 feet; increase all MDAs 40 feet and Circling visibility Cat C ¼ SM.

▲ MISSED APPROACH: Climb to 3000 direct AVCOF and hold, continue climb-in-hold to 3000.

AWOS-3PT 120.075	FORT MYERS APP CON * 124.125 371.85	CLNC DEL 120.8	UNICOM 122.7 (CTAF) 0
----------------------------	---	--------------------------	--



ELEV 5	TDZE 5
---------------	---------------



CATEGORY	A	B	C	D
LPV DA	286-1 281 (300-1)			
LNAV/VNAV DA	394-1½ 389 (400-1½)			
LNAV MDA	520-1	515 (600-1)	520-1½ 515 (600-1½)	520-1¾ 515 (600-1¾)
CIRCLING	620-1	615 (700-1)	660-1¾ 655 (700-1¾)	840-2¾ 835 (900-2¾)

SE-3, 17 APR 2025 to 15 MAY 2025

SE-3, 17 APR 2025 to 15 MAY 2025