

MILFORD, IOWA

AL-6455 (FAA)

23278

VOR/DME SPW 115.15 Chan 98 (Y)	APP CRS 005°	Rwy Idg TDZE Apt Elev N/A N/A 1439
--	------------------------	--

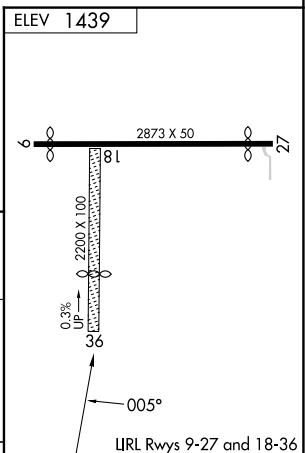
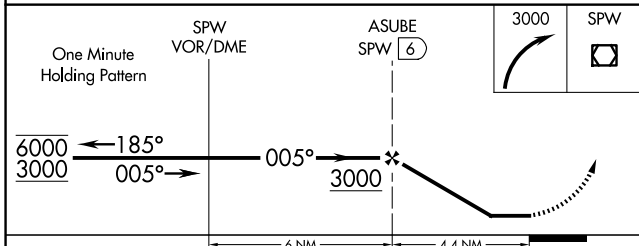
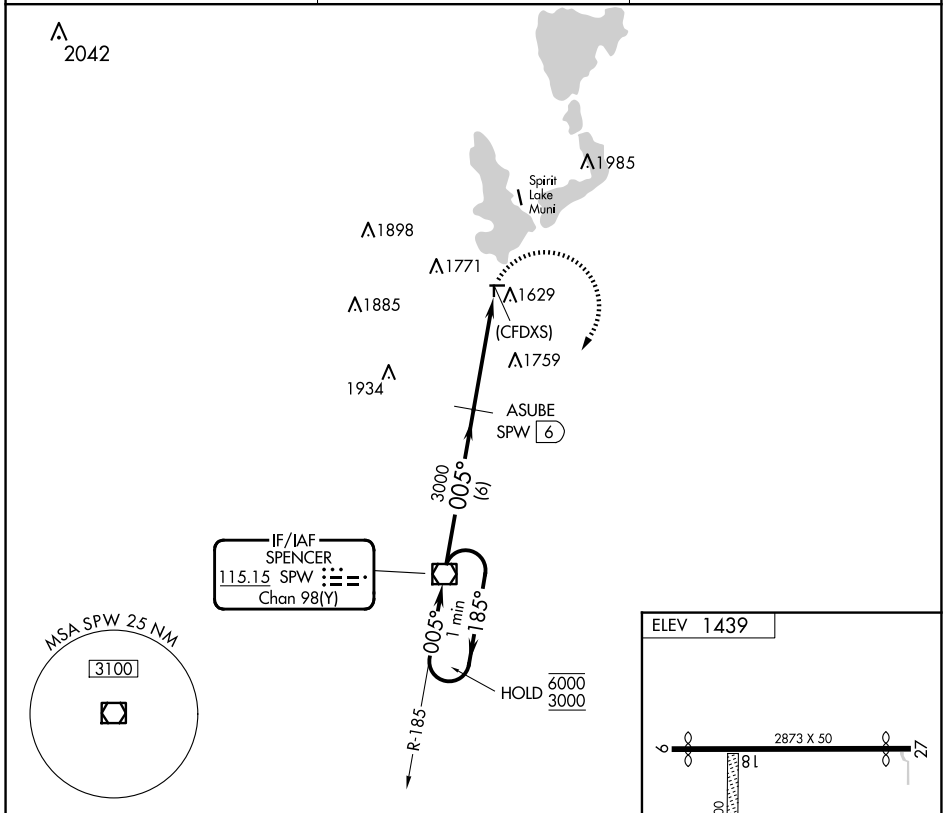
VOR-A
FULLER(4D8)

DME required. RADAR required for procedure entry.

NA Circling NA to Rwy 18 and 36. Procedure NA at night. Use Spencer altimeter setting, when not received, use Estherville altimeter setting and increase all MDA 40 feet.

MISSED APPROACH: Climbing right turn to 3000 direct SPW VOR/DME and hold.

SPW ASOS 126.625	MINNEAPOLIS CENTER 127.75 257.7	CTAF 122.9
----------------------------	---	----------------------



CATEGORY	A	B	C	D	FAF to MAP 4.4 NM												
C CIRCLING	2100-1	661 (700-1)	NA		<table border="1"> <tr> <td>Knots</td> <td>60</td> <td>90</td> <td>120</td> <td>150</td> <td>180</td> </tr> <tr> <td>Min:Sec</td> <td>4:24</td> <td>2:56</td> <td>2:12</td> <td>1:46</td> <td>1:28</td> </tr> </table>	Knots	60	90	120	150	180	Min:Sec	4:24	2:56	2:12	1:46	1:28
Knots	60	90	120	150	180												
Min:Sec	4:24	2:56	2:12	1:46	1:28												

MILFORD, IOWA
Amdt 1 03JAN19

43°20'N-95°10'W

FULLER(4D8)
VOR-A

NC-3, 17 APR 2025 to 15 MAY 2025

NC-3, 17 APR 2025 to 15 MAY 2025