

EDNA, TEXAS

AL-6468 (FAA)

24305

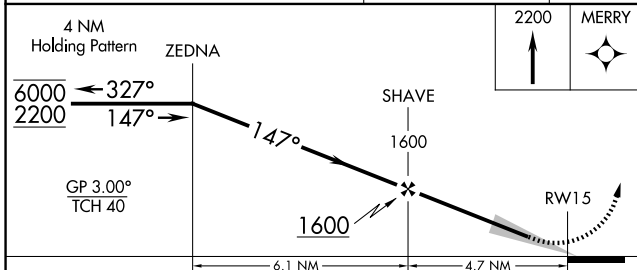
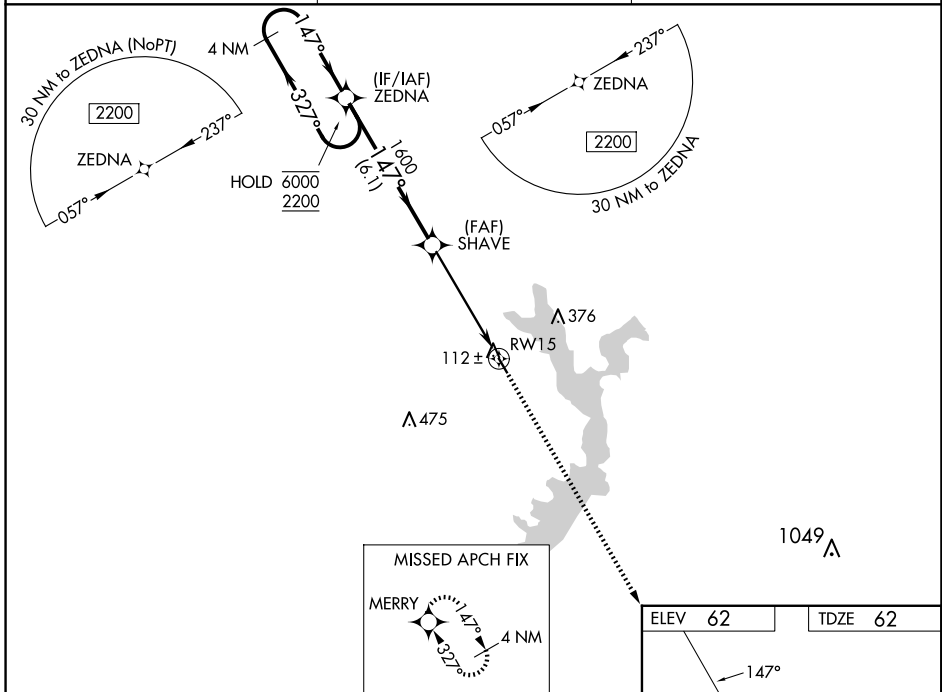
WAAS CH <b>50148</b> <b>W15A</b>	APP CRS <b>147°</b>	Rwy Idg TDZE Apt Elev	<b>3393</b> <b>62</b> <b>62</b>
--	------------------------	-----------------------------	---------------------------------------

# RNAV (GPS) RWY 15

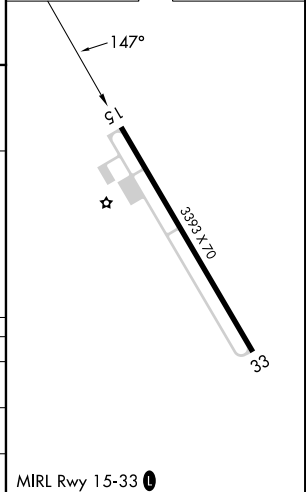
JACKSON COUNTY (26R)

RNP APCH - GPS.		MISSED APPROACH: Climb to 2200 direct MERRY and hold.
▼ ▲ NA	Baro-VNAV NA. Use VCT altimeter setting, when not received, use PKV altimeter setting.	

VCT ASOS <b>119.025</b>	HOUSTON CENTER <b>135.05 353.6</b>	UNICOM <b>122.8 (CTAF) 0</b>
----------------------------	---------------------------------------	---------------------------------



ELEV <b>62</b>	TDZE <b>62</b>
----------------	----------------



CATEGORY	A	B	C	D
LPV DA	366-7/8	304 (400-7/8)		NA
LNAV/VNAV DA	366-7/8	304 (400-7/8)		NA
LNAV MDA	600-1	538 (600-1)		NA

EDNA, TEXAS  
Orig 31OCT24

29°00'N-96°35'W

# RNAV (GPS) RWY 15

SC-5, 17 APR 2025 to 15 MAY 2025

SC-5, 17 APR 2025 to 15 MAY 2025