

APP CRS	Rwy Idg	<b>5099</b>
<b>024°</b>	TDZE	<b>1265</b>
	Apt Elev	<b>1265</b>

# RNAV (GPS) RWY 2

WILBARGER COUNTY (F05)

RNP APCH.

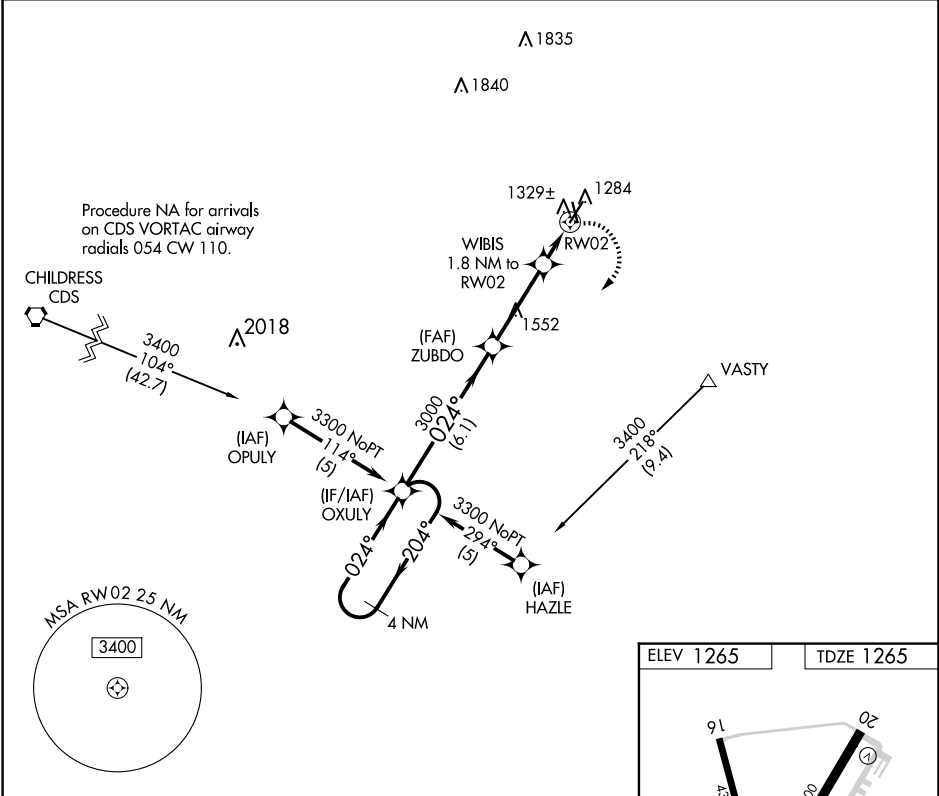
**▼** When local altimeter setting not received, use Frederick altimeter setting:  
**▲** increase all MDA 40 feet. VDP NA when using Frederick altimeter setting.

MISSED APPROACH: Climbing right turn to 3300 direct OXULY and hold.

AWOS-3  
**118.525**

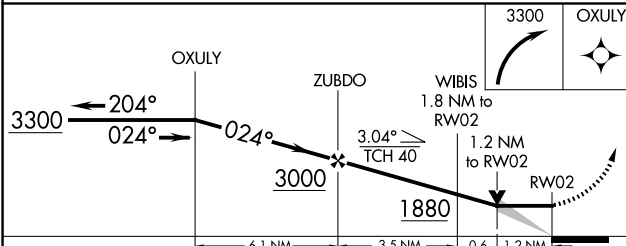
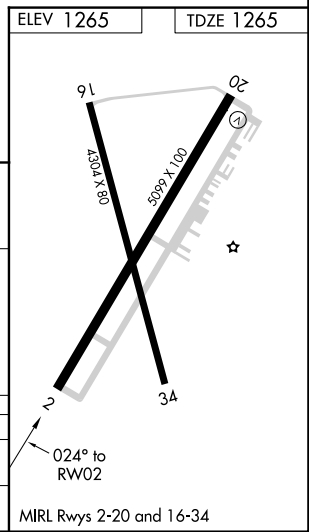
ALTUS APP CON\*  
**125.1 353.7**

UNICOM  
**122.8 (CTAF) 0**



SC-2, 17 APR 2025 to 15 MAY 2025

SC-2, 17 APR 2025 to 15 MAY 2025



CATEGORY	A	B	C	D
RNAV MDA	1680-1	415 (500-1)	1680-1¼ 415 (500-1¼)	NA
CIRCLING	1680-1 415 (500-1)	1720-1 455 (500-1)	1800-1½ 535 (600-1½)	NA