

WAAS CH <b>90527</b> <b>W23A</b>	APP CRS <b>229°</b>	Rwy Idg TDZE Apt Elev	<b>5105</b> <b>26</b> <b>26</b>
--	------------------------	-----------------------------	---------------------------------------

# RNAV (GPS) RWY 23

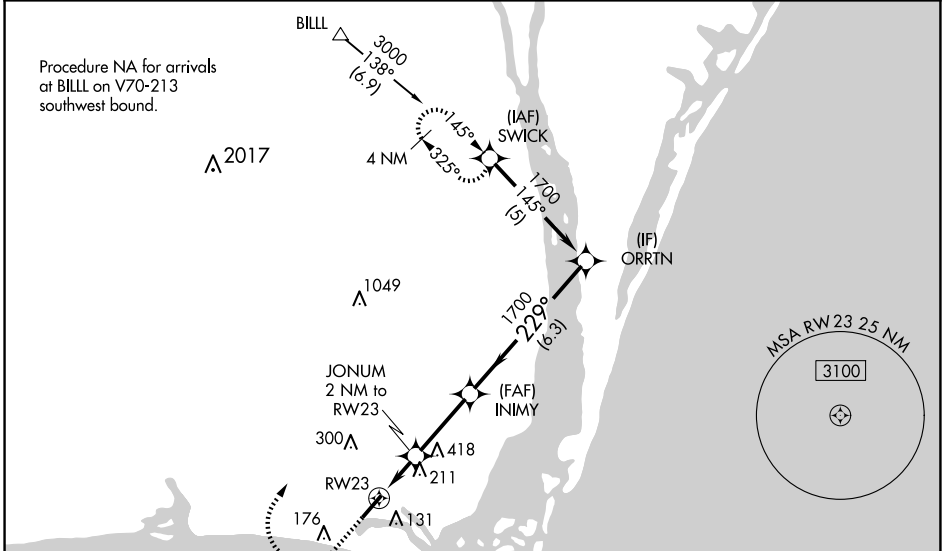
CAPE FEAR RGNL JETPORT/HOWIE FRANKLIN FLD (SU'T)

RNP APCH - GPS.

**⚠** Baro-VNAV NA when using Wilmington altimeter setting. For uncompensated Baro-VNAV systems, LNAV/VNAV NA below -15°C or above 54°C. When local altimeter setting not received, use Wilmington altimeter setting and increase LPV DA to 335 feet, increase LNAV/VNAV DA to 327 feet, increase all MDAs 60 feet and Circling visibility Cat C ¼ SM. Rwy 23 helicopter visibility reduction below ¾ SM NA. VDP NA when using Wilmington altimeter setting.

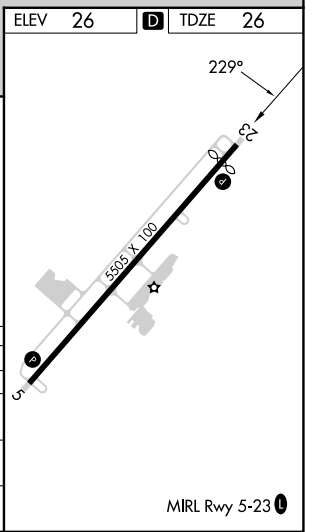
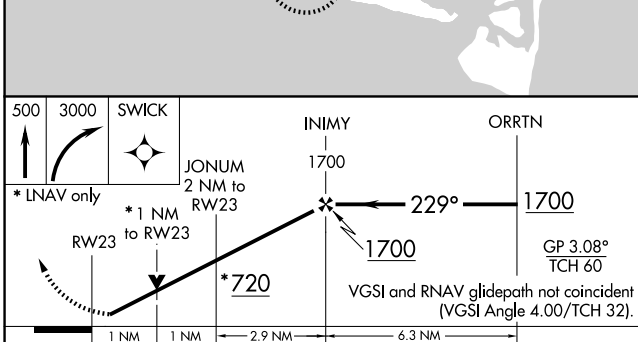
**⚠** MISSED APPROACH: Climb to 500 then climbing right turn to 3000 direct SWICK and hold.

AWOS-3P <b>124.175</b>	WILMINGTON APP CON ★ <b>118.25 284.65</b>	UNICOM <b>123.05(CTAF) 0</b>
---------------------------	--	---------------------------------



SE-2, 17 APR 2025 to 15 MAY 2025

SE-2, 17 APR 2025 to 15 MAY 2025



CATEGORY	A	B	C	D
LPV DA	284-1	258 (300-1)		NA
LNAV/VNAV DA	276-1	250 (300-1)		NA
LNAV MDA	480-1	454 (500-1)	480-1 <sup>3</sup> / <sub>8</sub> 454 (500-1 <sup>3</sup> / <sub>8</sub> )	NA
CIRCLING	480-1 454 (500-1)	520-1 494 (500-1)	720-2 694 (700-2)	NA

# RNAV (GPS) RWY 23

MIRA Rwy 5-23 0