

WAAS CH <b>86917</b> <b>W05A</b>	APP CRS <b>049°</b>	Rwy Idg TDZE Apt Elev	<b>5105</b> <b>24</b> <b>26</b>
--	------------------------	-----------------------------	---------------------------------------

# RNAV (GPS) RWY 5

## CAPE FEAR RGJL JETPORT/HOWIE FRANKLIN FLD (SU'T)

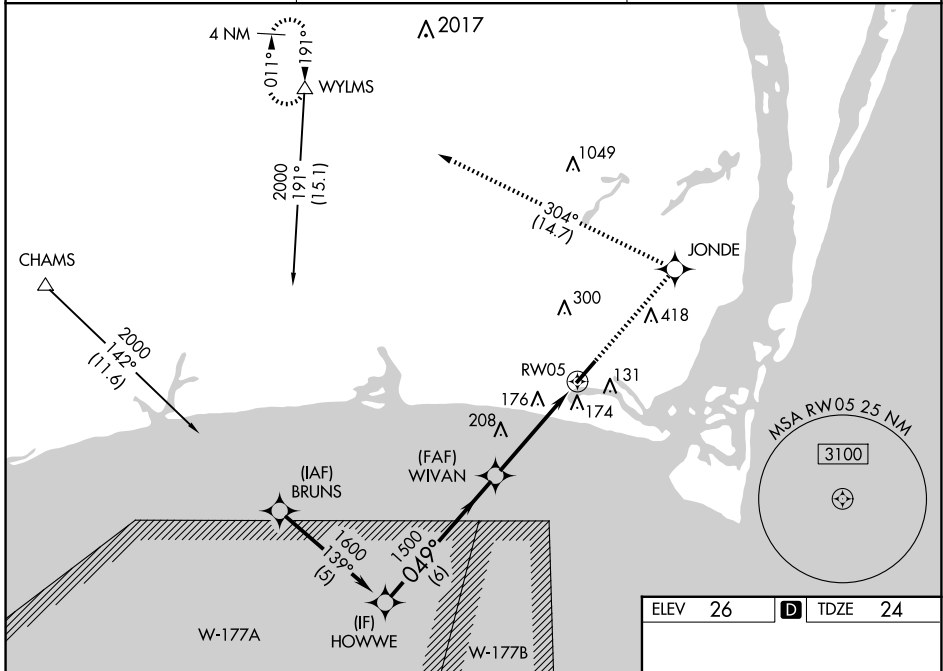
RNP APCH - GPS.

**▼** Baro-VNAV NA when using Wilmington altimeter setting. For uncompensated Baro-VNAV systems, LNAV/VNAV NA below -15°C or above 54°C. Rwy 5 helicopter visibility reduction below 3/4 SM NA.

**▲** When local altimeter setting not received, use Wilmington altimeter setting and increase LPV DA to 325 feet, increase LNAV/VNAV DA to 511 feet, increase all MDAs 60 feet and LNAV visibility Cat C 1/8 SM, and Circling visibility Cat C 1/4 SM. VDP NA when using Wilmington altimeter setting.

**MISSED APPROACH:**  
Climb to 3000 direct JONDE and left turn on track 304° to WYLSM and hold.

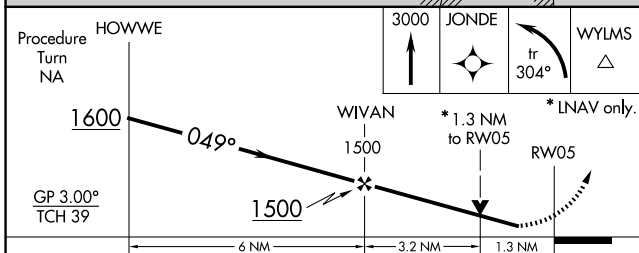
AWOS-3P <b>124.175</b>	WILMINGTON APP CON * <b>118.25 284.65</b>	UNICOM <b>123.05 (CTAF) ①</b>
---------------------------	--	----------------------------------



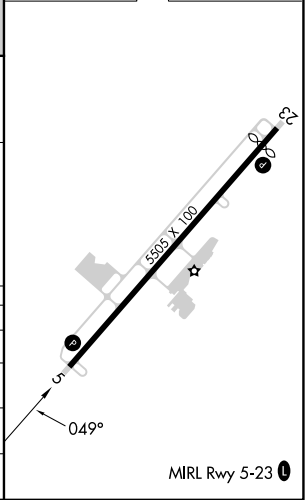
SE-2, 17 APR 2025 to 15 MAY 2025

SE-2, 17 APR 2025 to 15 MAY 2025

ELEV 26	<b>D</b> TDZE 24
---------	------------------



CATEGORY	A	B	C	D
LPV DA	274-1	250 (300-1)		NA
LNAV/VNAV DA	460-1½	436 (500-1½)		NA
LNAV MDA	460-1	436 (500-1)	460-1¼ 436 (500-1¼)	NA
CIRCLING	480-1 454 (500-1)	520-1 494 (500-1)	720-2 694 (700-2)	NA



# RNAV (GPS) RWY 5