

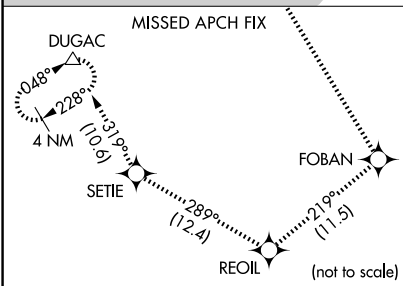
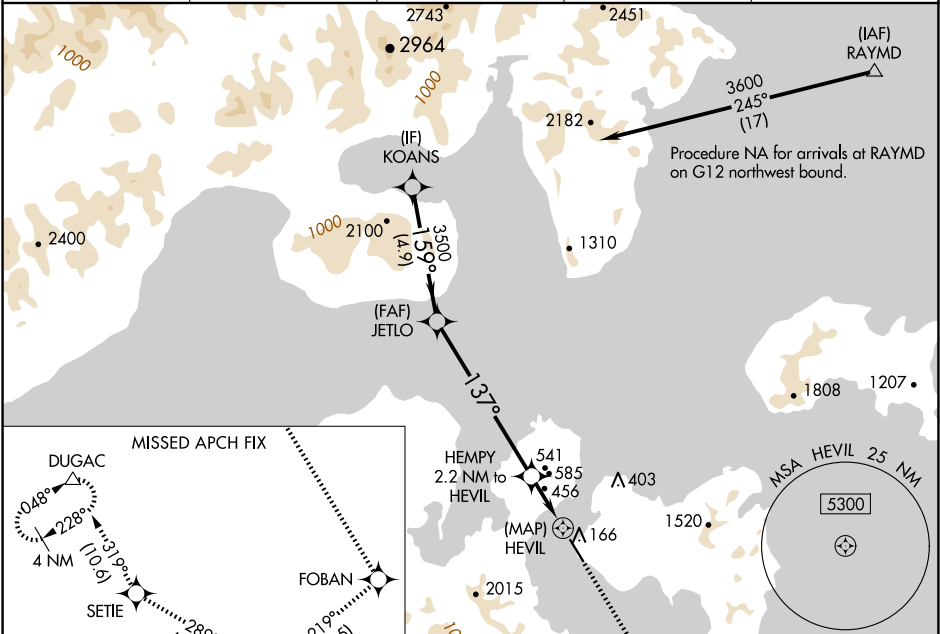
WAAS CH <b>86844</b> <b>W14B</b>	APP CRS <b>137°</b>	Rwy Idg TDZE Apt Elev	<b>4099</b> <b>23</b> <b>24</b>
--	------------------------	-----------------------------	---------------------------------------

# RNAV (GPS) Y RWY 14

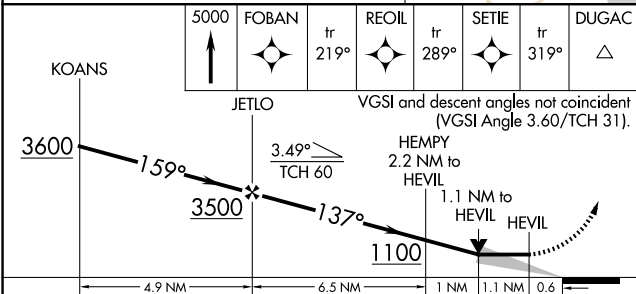
SAND POINT (SDP) (PASD)

RNP APCH-GPS.		MISSED APPROACH: Climb to 5000 on the RNAV missed approach route to DUGAC and hold.	
		Circling NA northeast of Rwy 14-32.	

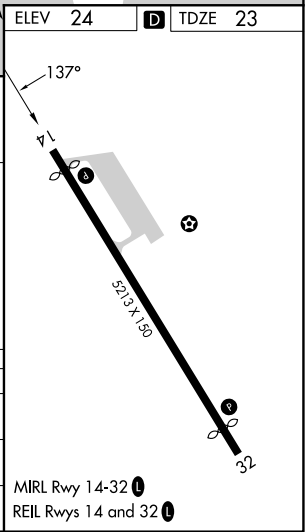
AWOS-3P <b>134.85</b>	ANCHORAGE CENTER <b>125.35 346.3</b>	CLNC DEL <b>122.3 (CTAF) 0</b>	COLD BAY RADIO <b>122.3</b>	UNICOM <b>122.8</b>
--------------------------	---	-----------------------------------	--------------------------------	------------------------



ELEV 24	<b>D</b> TDZE 23
---------	------------------



CATEGORY	A	B	C	D
LP MDA	720-1	697 (700-1)	720-2	697 (700-2)
RNAV MDA	840-1 817 (900-1)	840-1¼ 817 (900-1¼)	840-2½	817 (900-2½)
<b>C</b> CIRCLING	840-1¼	816 (900-1¼)	1580-3 1556 (1600-3)	2240-3 2216 (2300-3)



AK, 17 APR 2025 to 12 JUN 2025

AK, 17 APR 2025 to 12 JUN 2025