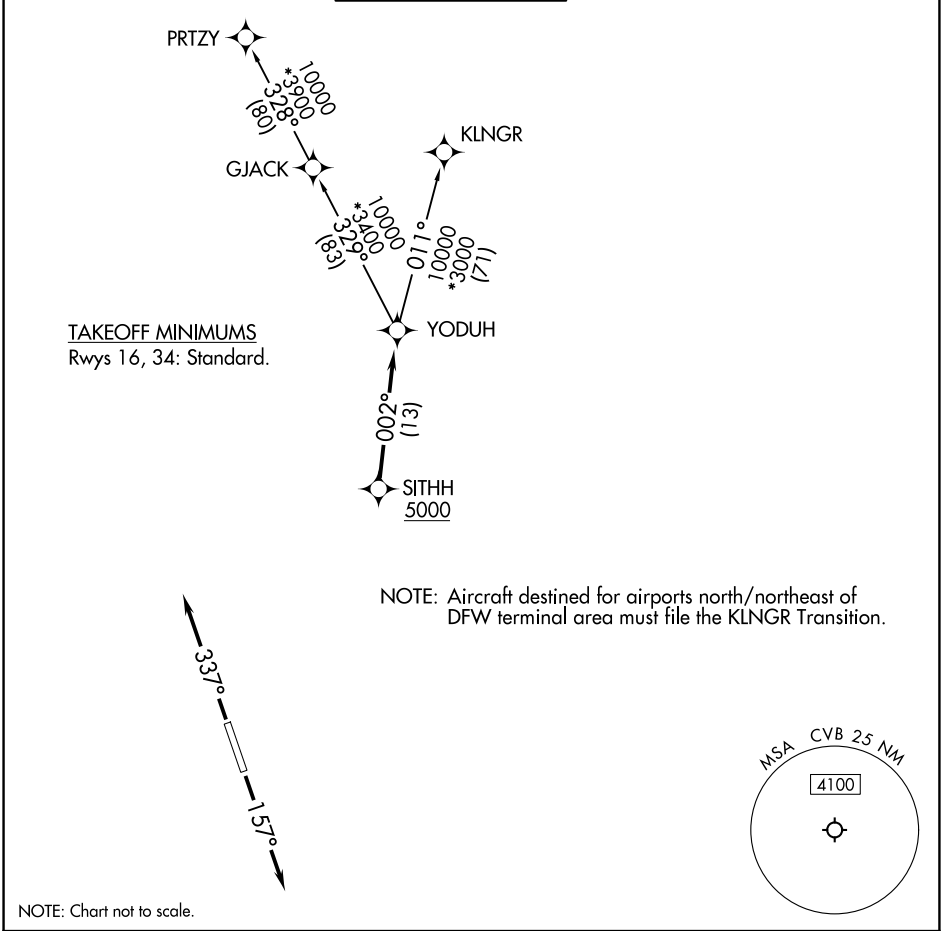


RNAV 1 - DME/DME IRU or GPS.	TOP ALTITUDE: ASSIGNED BY ATC	SAN ANTONIO DEP CON 118.05 353.5
RADAR required.		



▼	DEPARTURE ROUTE DESCRIPTION
<u>TAKEOFF RUNWAY 16:</u> Climb on heading 157° or as assigned by ATC, for vectors to SITHH, thence . . .	
<u>TAKEOFF RUNWAY 34:</u> Climb on heading 337° or as assigned by ATC, for vectors to SITHH, thence . . .	
. . . on track 002° to YODUH, then on Transition. Maintain ATC assigned altitude.	
<u>KLNGR TRANSITION (YODUH1.KLNGR)</u>	
<u>PRTZY TRANSITION (YODUH1.PRTZY)</u>	

SC-3, 17 APR 2025 to 15 MAY 2025

SC-3, 17 APR 2025 to 15 MAY 2025