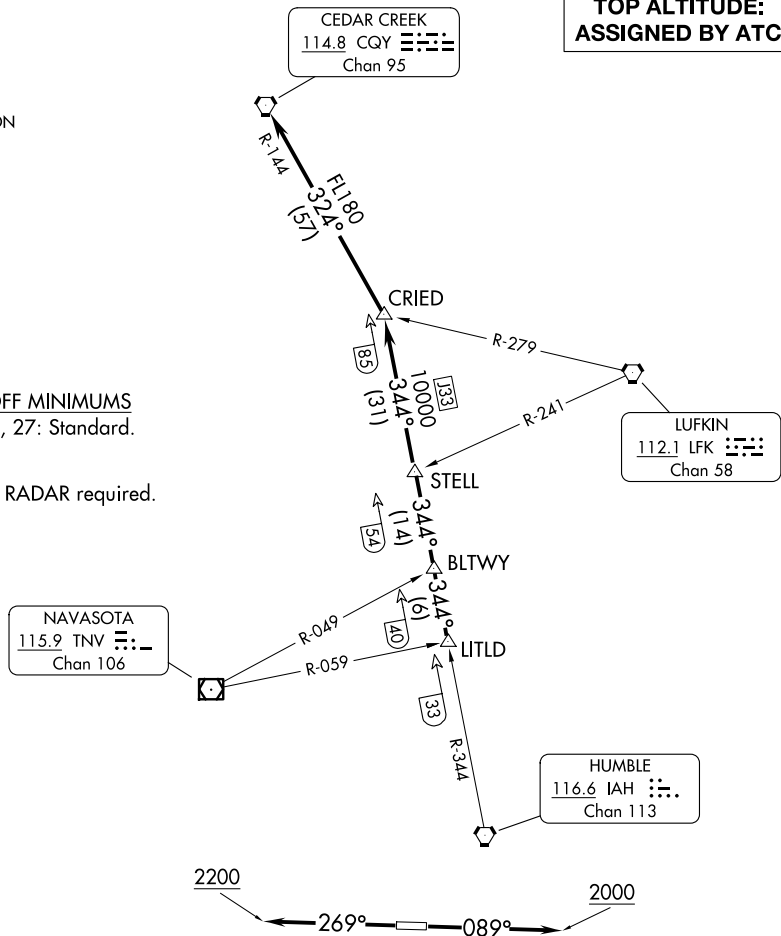


AWOS-3
123.625
CLNC DEL
120.8
CTAF
123.0
HOUSTON DEP CON
123.8 257.7

TOP ALTITUDE:
ASSIGNED BY ATC

TAKEOFF MINIMUMS
Rwys 9, 27: Standard.

NOTE: RADAR required.



DEPARTURE ROUTE DESCRIPTION

TAKEOFF RUNWAY 9: Climb on heading 089° to 2000 before turning. When entering controlled airspace, climb on assigned heading for RADAR vectors to LITLD INT. Maintain ATC assigned altitude. Expect filed altitude 10 minutes after departure, thence. . . .

TAKEOFF RUNWAY 27: Climb on heading 269° to 2200 before turning. When entering controlled airspace, climb on assigned heading for RADAR vectors to LITLD INT. Maintain ATC assigned altitude. Expect filed altitude 10 minutes after departure, thence. . . .

. . . . on IAH R-344 to STELL INT, then on IAH R-344 to CRIED INT, then left turn on CQY R-144 to CQY VORTAC.

SC-5, 17 APR 2025 to 15 MAY 2025

SC-5, 17 APR 2025 to 15 MAY 2025