

WAAS CH 42931 W17A	APP CRS 174°	Rwy Idg 5003
		TDZE 229
		Apt Elev 229

RNAV (GPS) RWY 17

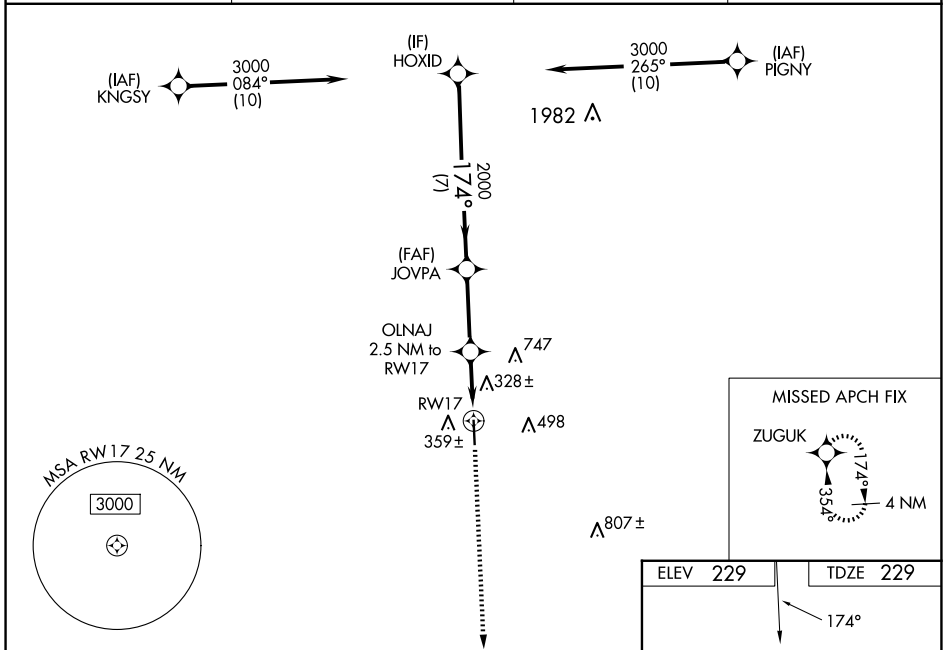
NAVASOTA MUNI (60R)

RNP APCH - GPS.

⚠ Rwy 17 helicopter visibility reduction below 3/4 NA. Baro-VNAV and VDP NA when using 11R altimeter setting. For uncompensated Baro-VNAV systems, LNAV/VNAV NA below -15C or above 54C. When local altimeter setting not received, use 11R altimeter setting and increase LPV DA to 529 feet and all visibilities 1/8 SM; increase LNAV/VNAV DA to 635 feet and all visibilities 1/8 SM; increase all MDAs 60 feet and LNAV visibility Cat C and D 1/8 SM.

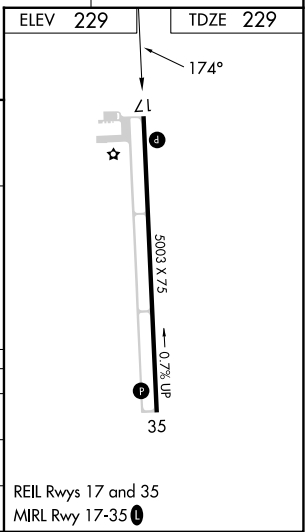
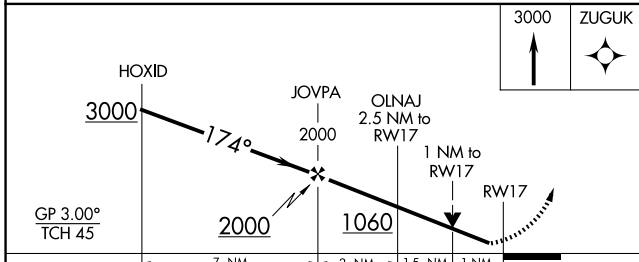
MISSED APPROACH: Climb to 3000 direct ZUGUK and hold.

AWOS-3PT 120.925	HOUSTON APP CON 134.3 360.85	CTAF 122.9	123.3
----------------------------	--	----------------------	--------------



SC-5, 17 APR 2025 to 15 MAY 2025

SC-5, 17 APR 2025 to 15 MAY 2025



		3000	ZUGUK	
		↑	✧	
		HOXID	JOVPA	
		3000	2000	
		174°	2000	
		2000	1060	
		7 NM	3 NM	
		1.5 NM	1 NM	
		OLNAJ	RWY 17	
		2.5 NM to RWY 17	1 NM to RWY 17	
CATEGORY	A	B	C	D
LPV DA		479-1	250 (300-1)	
LNAV/VNAV DA		585-1	356 (400-1)	
LNAV MDA		580-1	351 (400-1)	