

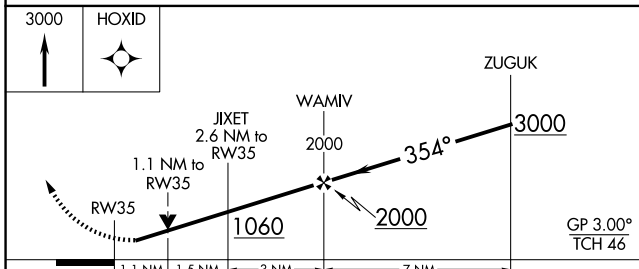
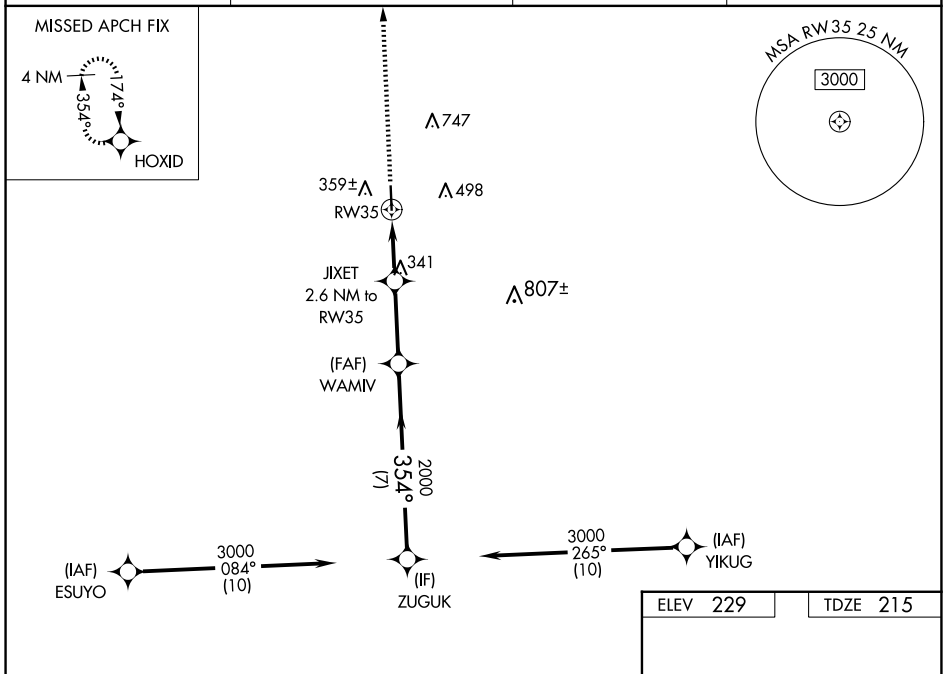
WAAS CH 42831 W35A	APP CRS 354°	Rwy Idg TDZE Apt Elev	5003 215 229
--	------------------------	-----------------------------	---

RNAV (GPS) RWY 35

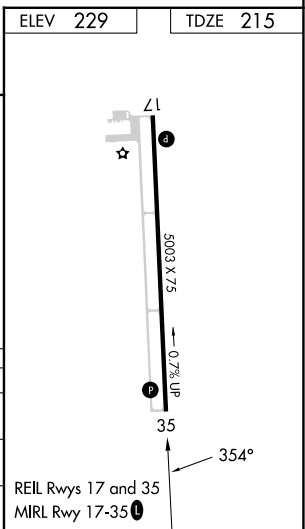
NAVASOTA MUNI (60R)

RNP APCH-GPS.	<p>⚠ Rwy 35 helicopter visibility reduction below 3/4 NA. Baro-VNAV and VDP NA when using 11R altimeter setting. For uncompensated Baro-VNAV systems, LNAV/VNAV NA below -15°C or above 54°C. When local altimeter setting not received, use 11R altimeter setting and increase LPV DA to 515 feet and all visibilities 1/8 SM; increase LNAV/VNAV DA to 515 feet and all visibilities 1/8 SM; increase all MDAs 60 feet and LNAV visibility Cat C and D 1/4 SM.</p>	MISSED APPROACH: Climb to 3000 direct HOXID and hold.

AWOS-3PT 120.925	HOUSTON APP CON 134.3 360.85	CTAF 122.9	123.3 0
----------------------------	--	----------------------	----------------



CATEGORY	A	B	C	D
LPV DA		465-1	250 (300-1)	
LNAV/VNAV DA		465-1	250 (300-1)	
LNAV MDA	600-1 385 (400-1)		600-1 1/8 385 (400-1 1/8)	



SC-5, 17 APR 2025 to 15 MAY 2025

SC-5, 17 APR 2025 to 15 MAY 2025