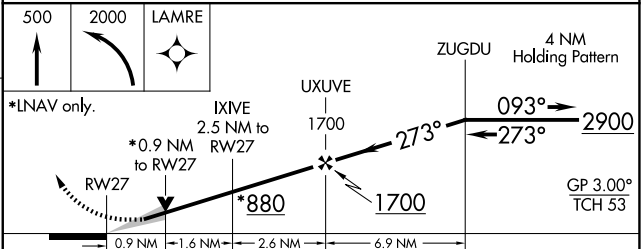
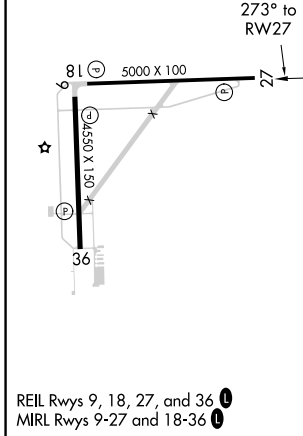
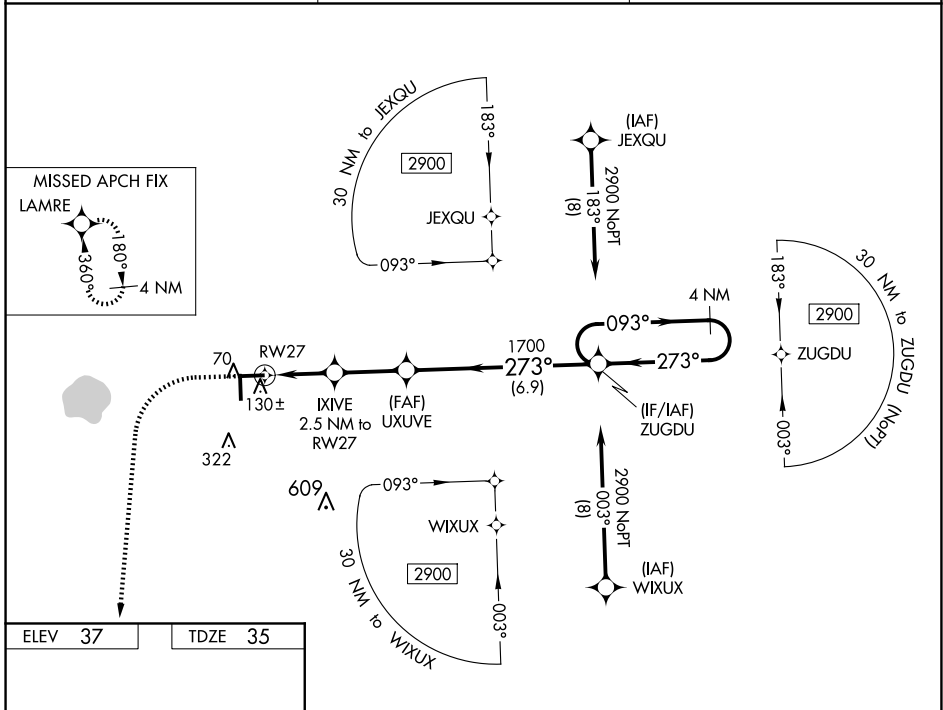


WAAS CH 69613 W27A	APP CRS 273°	Rwy ldg TDZE Apt Elev	5000 35 37
--	------------------------	-----------------------------	---------------------------------------

RNAV (GPS) RWY 27

IMMOKALEE RGNL (IMM)

RNP APCH.		MISSED APPROACH: Climb to 500 then climbing left turn to 2000 direct LAMRE and hold.
For uncompensated Baro-VNAV systems, LNAV/VNAV NA below 0°C (32°F) or above 54°C (130°F).		
AWOS-3 118.525	FORT MYERS APP CON ★ 124.125 371.85	CTAF 122.9



CATEGORY	A	B	C	D
LPV DA		285-1	250 (300-1)	
LNAV/VNAV DA		311-1	276 (300-1)	
LNAV MDA		380-1	345 (400-1)	
CIRCLING	500-1 463 (500-1)	640-1 603 (700-1)	640-1 ³ / ₄ 603 (700-1 ³ / ₄)	680-2 643 (700-2)

REIL Rwy 9, 18, 27, and 36
MIRL Rwy 9-27 and 18-36

IMMOKALEE, FLORIDA
Amdt 1A 16AUG18

26°26'N-81°24'W

RNAV (GPS) RWY 27

SE-3, 17 APR 2025 to 15 MAY 2025