

LANETT, ALABAMA

AL-6620 (FAA)

24081

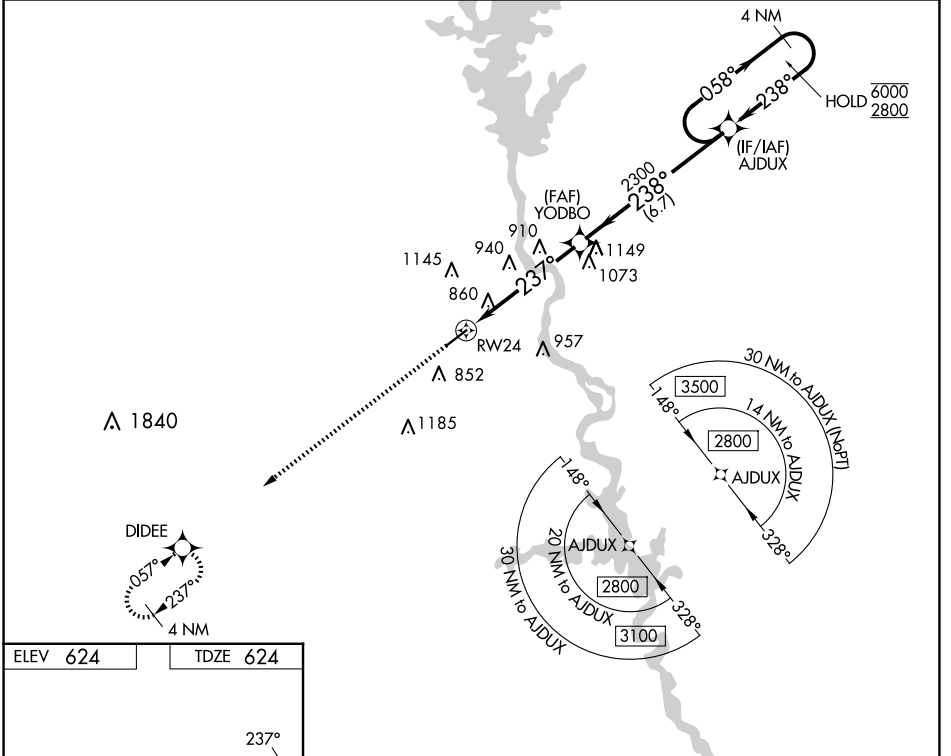
WAAS CH <b>97444</b> <b>W24A</b>	APP CRS <b>237°</b>	Rwy Idg TDZE Apt Elev	<b>5400</b> <b>624</b> <b>624</b>
--	------------------------	-----------------------------	---

# RNAV (GPS) RWY 24

LANETT RGNL (7A.3)

RNP APCH-GPS.	MISSED APPROACH: Climb to 2900 direct DIDEE and hold.
▼ Procedure NA at night. Rwy 24 helicopter visibility reduction below 1 SM NA. Use LaGrange altimeter setting.	

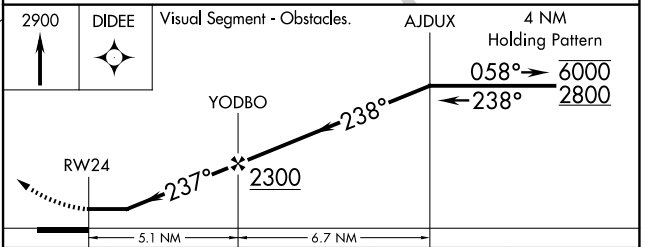
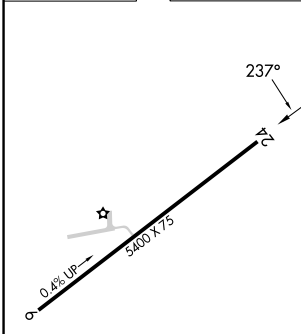
LGC AWOS-3 <b>126.325</b>	ATLANTA CENTER <b>120.45 298.85</b>	ATLANTA APP CON * <b>125.5 323.1</b>	UNICOM <b>122.8</b> (CTAF) <b>0</b>
------------------------------	--	---	--



SE-4, 17 APR 2025 to 15 MAY 2025

SE-4, 17 APR 2025 to 15 MAY 2025

ELEV 624	TDZE 624
----------	----------



CATEGORY	A	B	C	D
LP MDA	1160-1	536 (600-1)	1160-1½	536 (600-1½)
LNAV MDA	1340-1	716 (800-1)	1340-2	716 (800-2)
CIRCLING	1340-1	716 (800-1)	1620-3	996 (1000-3)

MIRL Rwy 6-24 **0**  
REIL Rwy 6 and 24 **0**

LANETT, ALABAMA  
Orig 27JAN22

32°49'N-85°14'W

# LANETT RGNL (7A.3) RNAV (GPS) RWY 24