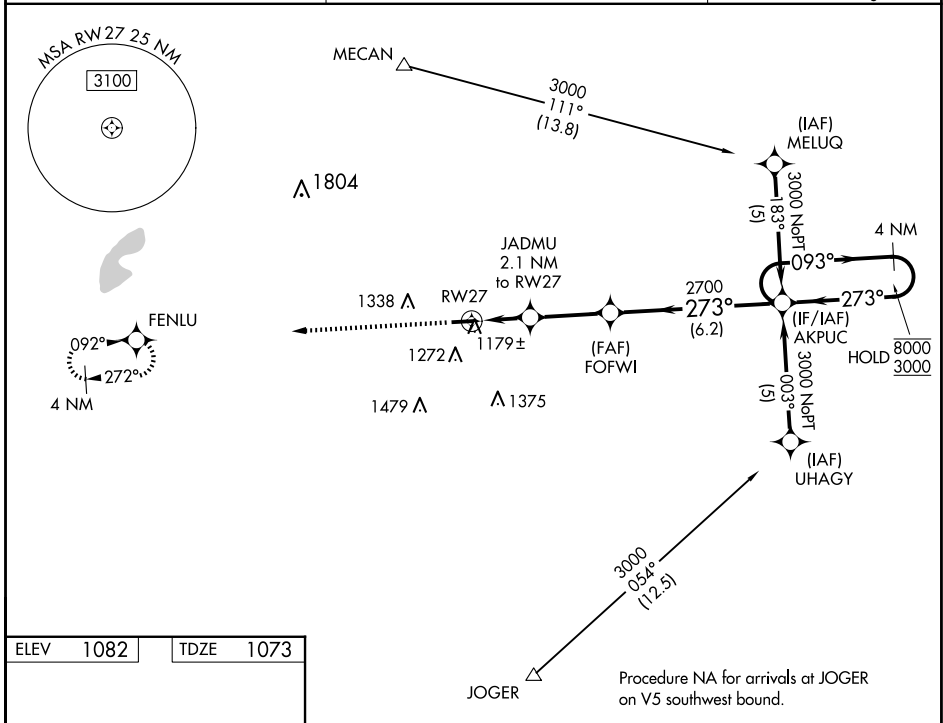


WAAS CH <b>61009</b> <b>W27A</b>	APP CRS <b>273°</b>	Rwy Idg <b>4000</b>
		TDZE <b>1073</b>
		Apt Elev <b>1082</b>

# RNAV (GPS) RWY 27

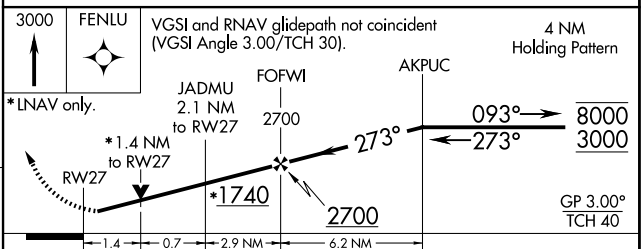
MADISON COUNTY (UYF)

RNP APCH - GPS		MISSED APPROACH: Climb to 3000 direct FENLU and hold.
<p><b>⚠</b> Rwy 27 helicopter visibility reduction below <math>\frac{3}{4}</math> SM NA. For uncompensated Baro-VNAV systems, LNAV/VNAV NA below -17°C or above 54°C.</p>		
AWOS-3PT <b>120.85</b>	COLUMBUS APP CON <b>134.0 279.6</b>	UNICOM <b>123.0 (CTAF) 0</b>



ELEV 1082	TDZE 1073
-----------	-----------

REIL Rws 9 and 27 **0**  
MIRL Rwy 9-27 **0**



CATEGORY	A	B	C	D
LPV DA	1400-1 $\frac{1}{4}$ 327 (400-1 $\frac{1}{4}$ )			
LNAV/VNAV DA	1449-1 $\frac{1}{2}$ 376 (400-1 $\frac{1}{2}$ )			
LNAV MDA	1540-1	467 (500-1)	1540-1 $\frac{3}{8}$ 467 (500-1 $\frac{3}{8}$ )	1540-1 $\frac{1}{2}$ 467 (500-1 $\frac{1}{2}$ )
CIRCLING	1600-1 518 (600-1)	1640-1 558 (600-1)	1640-1 $\frac{1}{2}$ 558 (600-1 $\frac{1}{2}$ )	1840-2 $\frac{1}{2}$ 758 (800-2 $\frac{1}{2}$ )

EC-2, 17 APR 2025 to 15 MAY 2025

EC-2, 17 APR 2025 to 15 MAY 2025