

WAAS CH 93804 W18A	APP CRS 176°	Rwy Idg TDZE Apt Elev	5201 1277 1277
--	------------------------	-----------------------------	---

RNAV (GPS) RWY 18

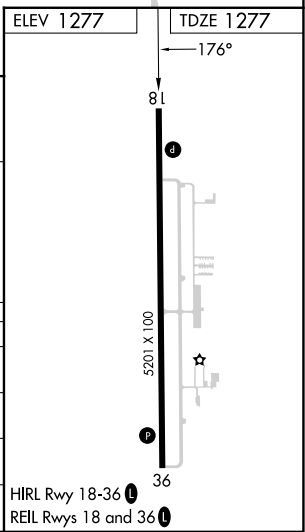
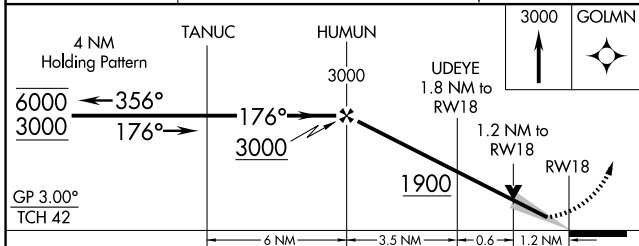
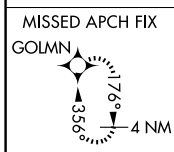
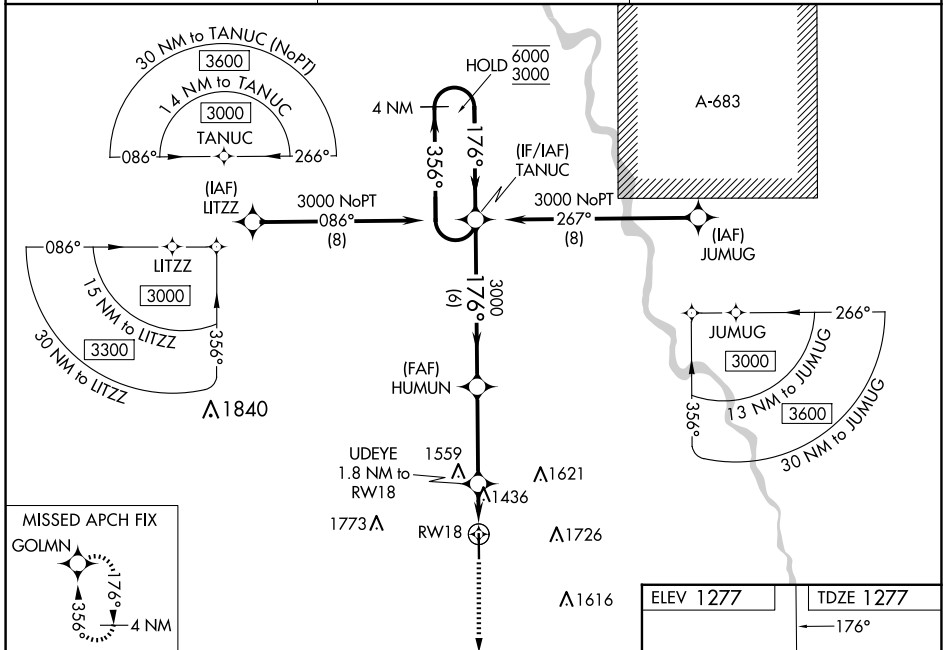
WELLINGTON MUNI (E.G.T)

RNP APCH - GPS.

⚠ Baro-VNAV and VDP NA when using ICT altimeter setting. For uncompensated Baro-VNAV systems, LNAV/VNAV NA below -17°C or above 54°C. When local altimeter setting not received, use ICT altimeter setting: increase LPV DA to 1530 feet; increase LNAV/VNAV DA to 1775 feet; increase all MDAs 60 feet and LNAV Cats C/D visibility 1/8 SM and Circling Cat C/D visibility 1/4 SM.

MISSED APPROACH: Climb to 3000 direct GOLMN and hold.

AWOS-3P 118.875	WICHITA APP CON 134.85	UNICOM 122.8 (CTAF)
---------------------------	----------------------------------	-------------------------------



CATEGORY	A	B	C	D
LPV DA	1477-1 200 (200-1)			
LNAV/VNAV DA	1722-1 3/8 445 (500-1 3/8)			
LNAV MDA	1700-1 423 (500-1)	1700-1 1/4 423 (500-1 1/4)		
C CIRCLING	1760-1 483 (500-1)	2040-2 1/4 763 (800-2 1/4)	2140-2 3/4 863 (900-2 3/4)	

NC-2, 17 APR 2025 to 15 MAY 2025

NC-2, 17 APR 2025 to 15 MAY 2025