

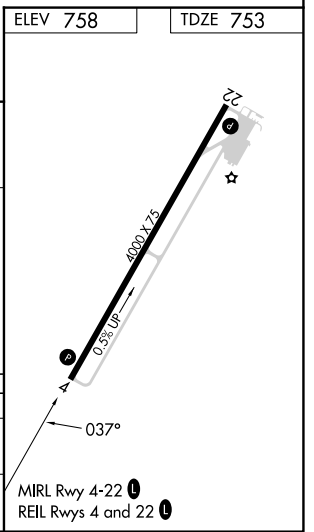
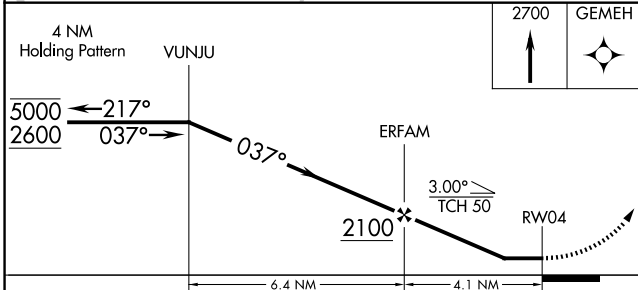
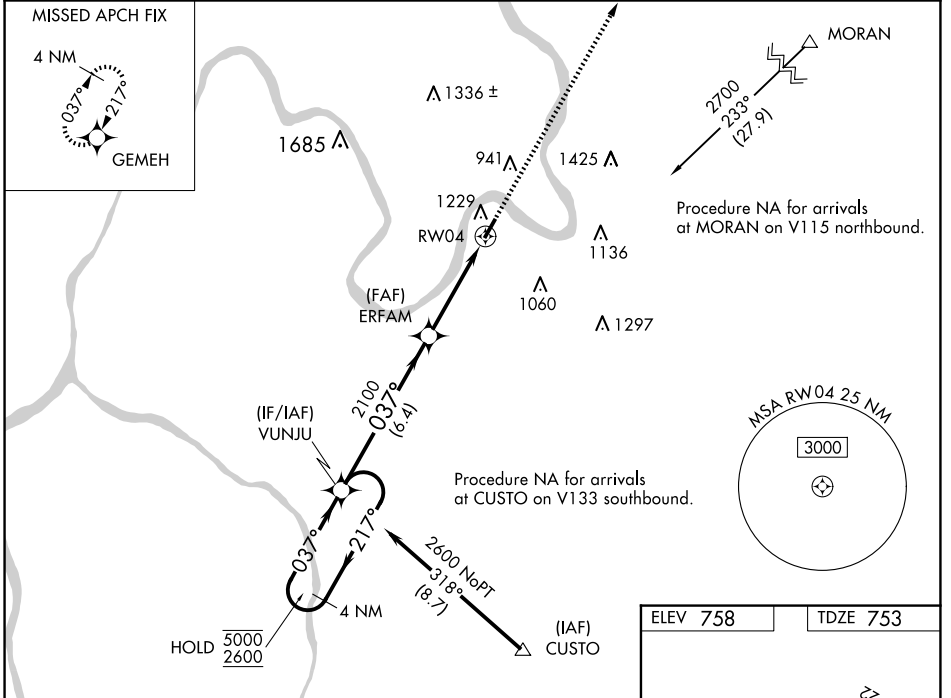
APP CRS	Rwy Idg	4000
037°	TDZE	753
	Apt Elev	758

RNAV (GPS) RWY 4

JACKSON COUNTY (I18)

RNP APCH - GPS.		<p>MISSED APPROACH: Climb to 2700 direct GEMEH and hold.</p>
<p>▽ Rwy 4 helicopter visibility reduction below 1 SM NA. When local altimeter setting not received, use Point Pleasant altimeter setting and increase all MDA 60 feet; increase LNAV Cat C visibility $\frac{1}{8}$ SM and Circling Cat C visibility $\frac{1}{4}$ SM. Straight-in Rwy 4 NA at night, Circling Rwy 4 NA at night.</p>		

AWOS-2 121.3	HUNTINGTON APP CON 128.4 270.1	UNICOM 122.8 (CTAF) 0
------------------------	--	---------------------------------



CATEGORY	A	B	C	D
LNAV MDA	1400-1	647 (700-1)	1400- $1\frac{7}{8}$ 647 (700- $1\frac{7}{8}$)	NA
CIRCLING	1600- $1\frac{1}{4}$	842 (900- $1\frac{1}{4}$)	1600- $2\frac{1}{2}$ 842 (900- $2\frac{1}{2}$)	NA

NE-4, 17 APR 2025 to 15 MAY 2025

NE-4, 17 APR 2025 to 15 MAY 2025