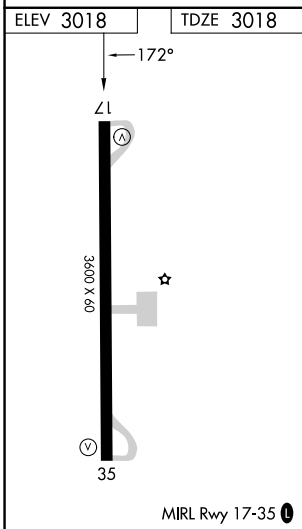
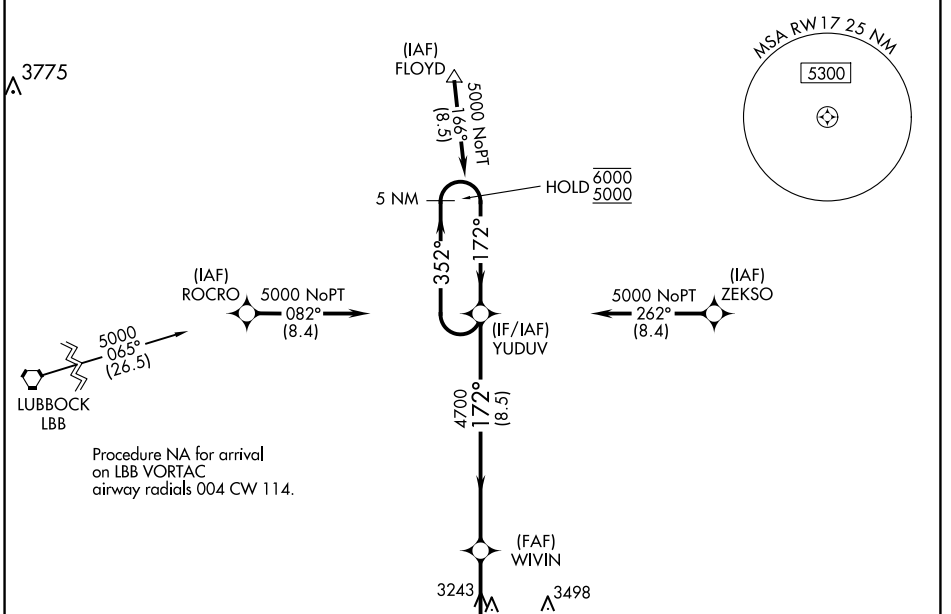


WAAS CH 82722 W17A	APP CRS 172°	Rwy Idg TDZE Apt Elev	3600 3018 3018
----------------------------------------	------------------------	-----------------------------	-------------------------------------------

RNAV (GPS) RWY 17

CROSBYTON MUNI (8F3)

RNP APCH.		MISSED APPROACH: Climb to 5000 direct CEGUT and hold.
<p>▼ Procedure NA at night.</p> <p>▲ NA Rwy 17 helicopter visibility reduction below 1 SM NA. Use Lubbock altimeter setting.</p>		
LBB ASOS 125.3	LUBBOCK APP CON 119.2 351.8	UNICOM 122.8 (CTAF) 0



MISSED APCH FIX CEGUT		5 NM Holding Pattern			
5000	CEGUT	WIVIN	YUDUV	6000	5000
RW17		4700	352° / 172°		
3.9 NM		8.5 NM			
CATEGORY	A	B	C	D	
LP MDA	3660-1	642 (700-1)	NA		
LNAV MDA	3700-1	682 (700-1)	NA		

SC-2, 17 APR 2025 to 15 MAY 2025

SC-2, 17 APR 2025 to 15 MAY 2025