

WAAS CH 48826 W09A	APP CRS 092°	Rwy Idg TDZE 774 Apt Elev 774	4699
--	------------------------	---	-------------

RNAV (GPS) RWY 9

GLADWIN ZETTEL MEML (GDW)

RNP APCH.

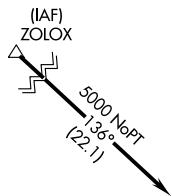
▽ Circling NA to Rwy's 15 and 33. Rwy 9 helicopter visibility reduction below 1 SM NA. DME/DME RNP-0.3 NA. Procedure NA at night. Use Mount Pleasant altimeter setting; when not received, use Midland altimeter setting and increase all MDA 20 feet; increase LP and LNAV Cats C/D visibility $\frac{1}{8}$ SM.

▲ NA

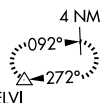
MISSED APPROACH: Climb to 3000 direct WELVI and hold.

GREAT LAKES APP CON *
126.45 235.625

UNICOM
122.8 (CTAF) 0

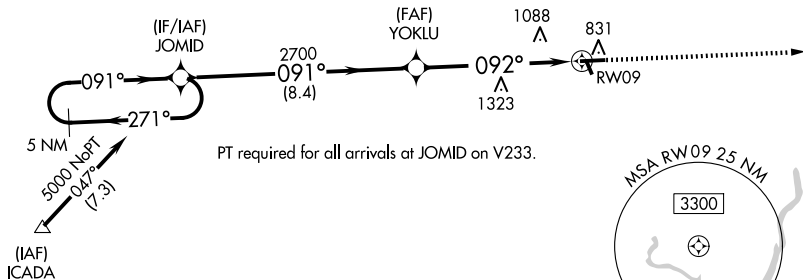


MISSED APCH FIX

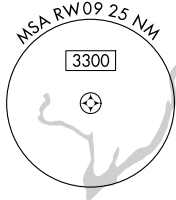


1743 Δ

1164 Δ



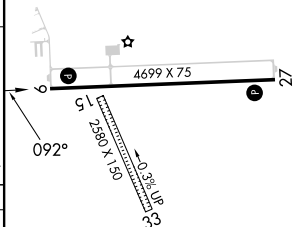
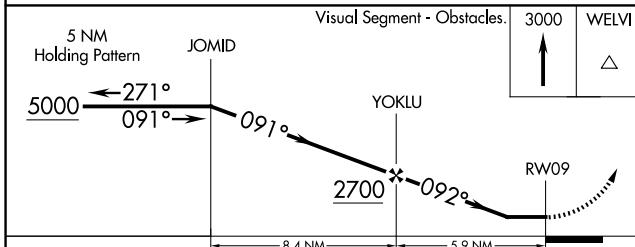
PT required for all arrivals at JOMID on V233.



EC-1, 17 APR 2025 to 15 MAY 2025

EC-1, 17 APR 2025 to 15 MAY 2025

ELEV 774	TDZE 774
----------	----------



CATEGORY	A	B	C	D
LP MDA	1440-1	666 (700-1)	1440-1 $\frac{7}{8}$	666 (700-1 $\frac{1}{8}$)
LNAV MDA	1440-1	666 (700-1)	1440-1 $\frac{7}{8}$	666 (700-1 $\frac{1}{8}$)
CIRCLING	1440-1 666 (700-1)	1500-1 726 (800-1)	1520-2 $\frac{1}{4}$ 746 (800-2 $\frac{1}{4}$)	1700-3 926 (1000-3)

REIL Rwy's 9 and 27 **0**
MIRL Rwy 9-27 **0**