

APP CRS	Rwy Idg	5211
135°	TDZE	76
	Apt Elev	76

RNAV (GPS) RWY 13

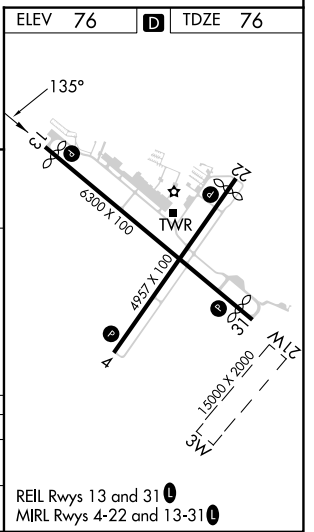
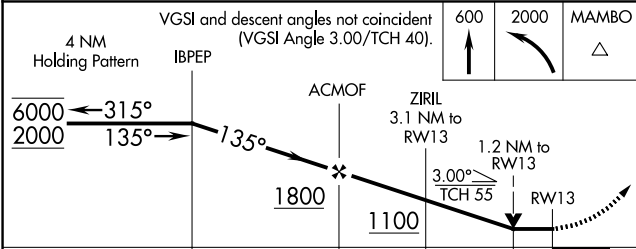
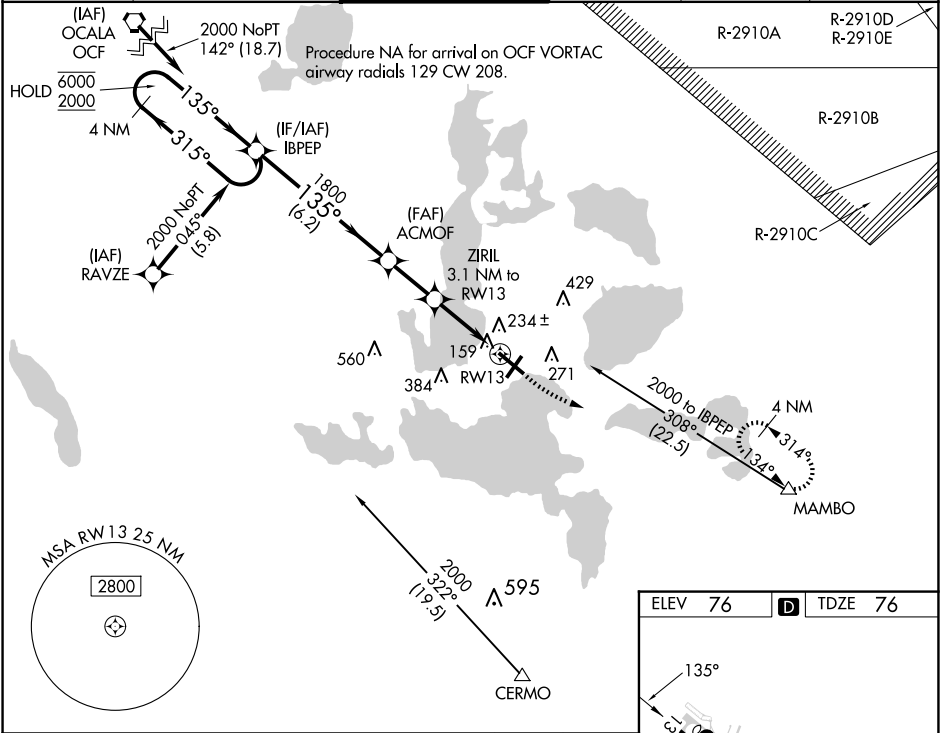
LEESBURG INTL (L.E.E)

RNP APCH - GPS.

⚠ Circling NA to Rwsy 3W and 21W. Rwy 13 helicopter visibility reduction below 3/4 SM NA.
 ⚠ VDP NA when using Orlando Intl altimeter setting. When local altimeter setting not received, use Orlando Intl altimeter setting and increase all MDAs 100 feet and LNAV visibility Cat C/D 1/4 SM, and Circling visibility Cat C/D 1/4 SM. Circling Rwy 4, 22 NA at night.

MISSED APPROACH: Climb to 600 then climbing left turn to 2000 direct MAMBO and hold.

ATIS 134.325	ORLANDO APP CON 135.3 351.9	LEESBURG TOWER ★ 119.35 (CTAF) 0	GND CON 121.725	CLNC DEL 120.225 (When twr closed)	UNICOM 122.725
------------------------	---------------------------------------	--	---------------------------	---	--------------------------



CATEGORY	A	B	C	D
LNAV MDA	500-1	424 (500-1)	500-1 1/4	424 (500-1 1/4)
CIRCLING	700-1	624 (700-1)	780-2 704 (800-2)	780-2 1/4 704 (800-2 1/4)

SE-3, 17 APR 2025 to 15 MAY 2025

SE-3, 17 APR 2025 to 15 MAY 2025