

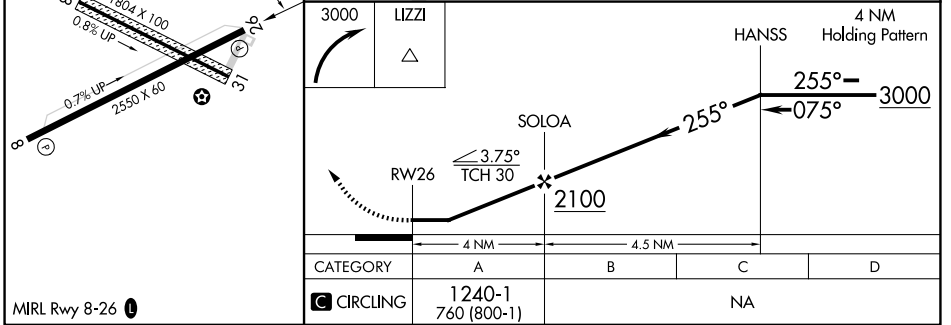
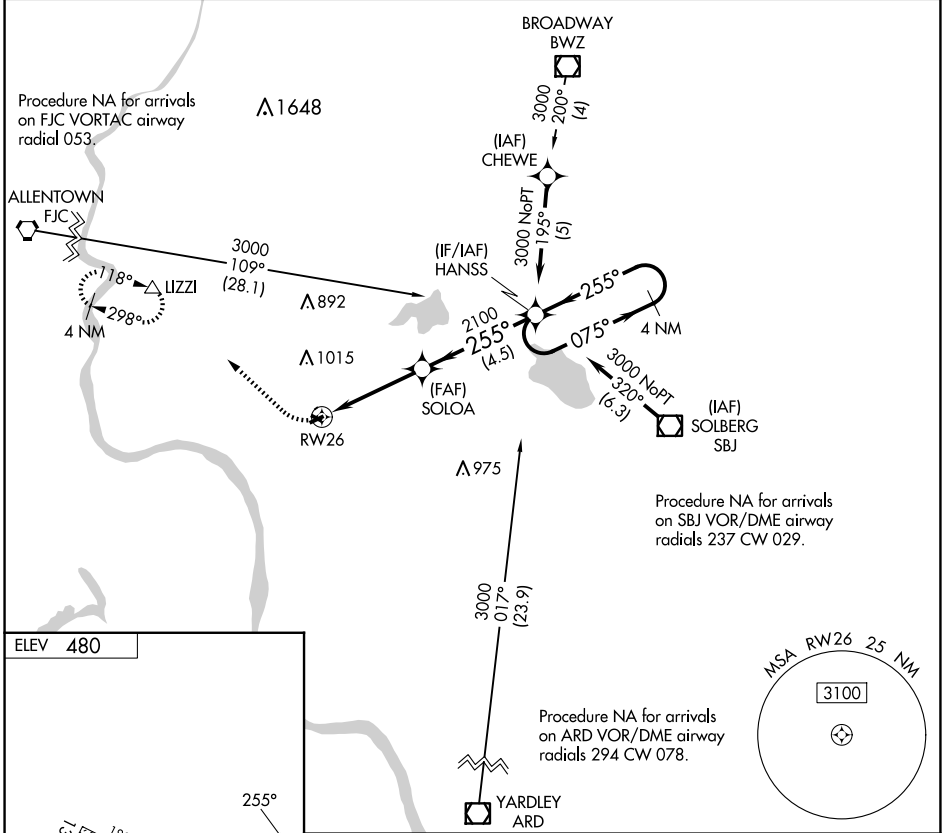
APP CRS	Rwy Idg	NA
255°	TDZE	NA
	Apt Elev	480

RNAV (GPS)-B

ALEXANDRIA (N85)

<p>▽ NA</p> <p>DME/DME RNP-0.3 NA. Use Lehigh Valley Intl, Allentown, PA altimeter setting. Procedure NA at night. Helicopter visibility reduction below 1 SM NA.</p>	<p>MISSED APPROACH: Climbing right turn 3000 direct LIZZI and hold.</p>
--	---

<p>ALLENTOWN APP CON</p> <p>119.65 124.45 351.8</p>	<p>UNICOM</p> <p>122.975 (CTAF)</p>	<p>121.8 0</p>
--	--	-----------------------



NE-2, 17 APR 2025 to 15 MAY 2025

NE-2, 17 APR 2025 to 15 MAY 2025