

APP CRS	Rwy Idg	<b>7000</b>
<b>259°</b>	TDZE	<b>5537</b>
	Apt Elev	<b>5537</b>

# RNAV (GPS) W RWY 26

RIFLE GARFIELD COUNTY (RIL)

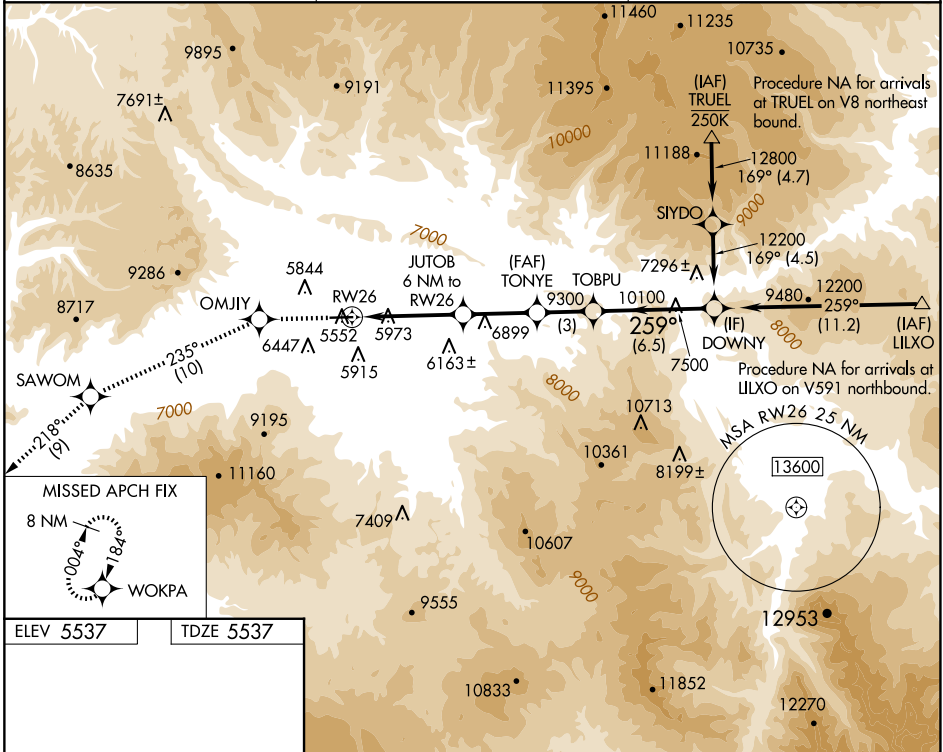
RNP APCH - GPS.

**▼** Rwy 26 helicopter visibility reduction below ¼ SM NA.  
**▲** Inop table does not apply. Circling NA south of  
**☉** -14°C Rwy 8-26 at night.

ODALS

**MISSED APPROACH:** Climb to 14000 direct OMJIY and on track 235° to SAWOM and on track 218° to WOKPA and hold, continue climb-in-hold to 14000.

ASOS <b>135.275</b>	DENVER CENTER <b>134.95 327.075</b>	UNICOM <b>122.8 (CTAF) 0</b>
------------------------	--	---------------------------------



ELEV 5537	TDZE 5537
-----------	-----------

HIRL Rwy 8-26 0  
 REIL Rwy 8 0

14000	OMJIY	tr 235°	SAWOM	tr 218°	WOKPA	DOWNY	
			JUTOB 6 NM to RW26	TONYE			
			4.3 NM to RW26	7820	9300	12200	
			1.7 NM	4 NM	3 NM	6.5 NM	
CATEGORY	A		B		C		D
LNAV MDA	7220-1¼ 1683 (1700-1¼)		7220-1½ 1683 (1700-½)		7220-3		1683 (1700-3)
CIRCLING	7220-1¼ 1683 (1700-1¼)		7220-1½ 1683 (1700-½)		7220-3		8100-3 2563 (2600-3)

SW-1, 17 APR 2025 to 15 MAY 2025

SW-1, 17 APR 2025 to 15 MAY 2025