

APP CRS	Rwy Idg	7000
068°	TDZE	5498
	Apt Elev	5537

RNAV (GPS) Y RWY 8

RIFLE GARFIELD COUNTY (R.I.L)

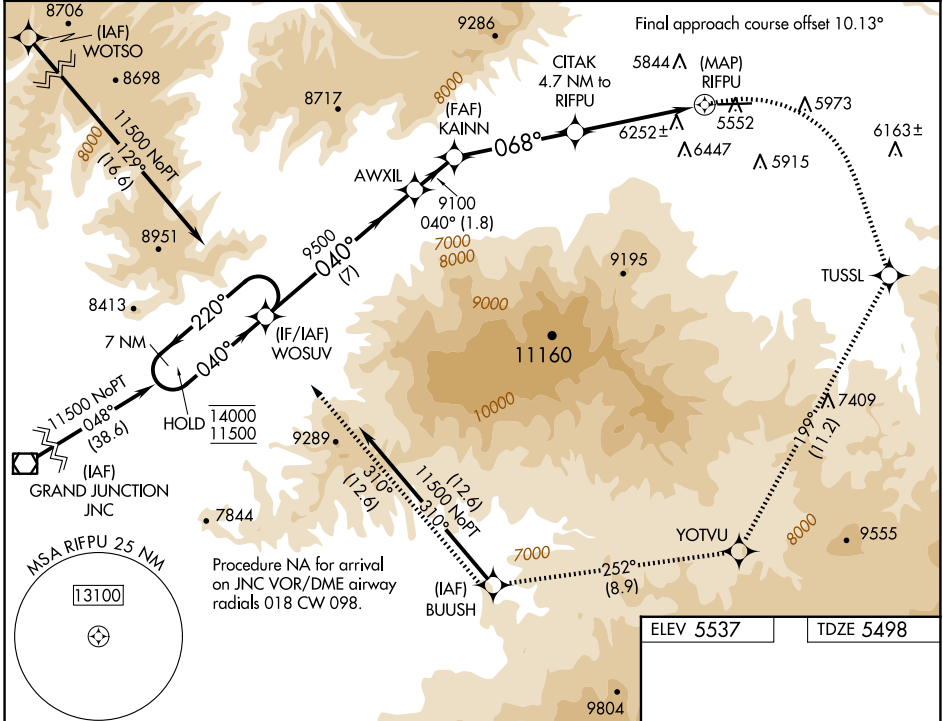
RNP APCH - GPS.

⚠ Circling NA south of Rwy 8-26 at night.

❄ -14°C

MISSED APPROACH: Climbing right turn to 14000 direct TUSSL and on track 199° to YOTVU and on track 252° to BUUSH and on track 310° to WOSUV and hold, continue climb-in-hold to 14000.

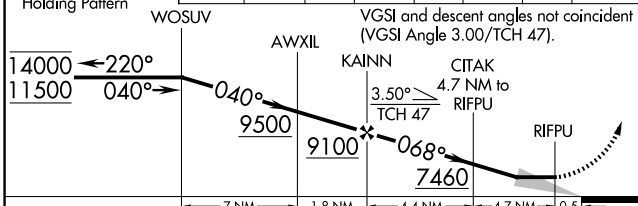
ASOS 135.275	DENVER CENTER 134.95 327.075	UNICOM 122.8 (CTAF) 0
------------------------	--	---------------------------------



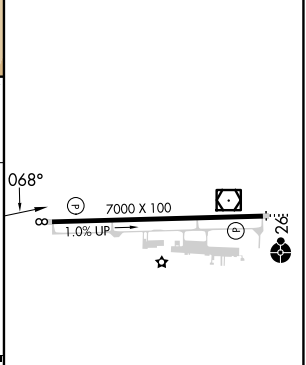
SW-1, 17 APR 2025 to 15 MAY 2025

SW-1, 17 APR 2025 to 15 MAY 2025

7 NM Holding Pattern	14000	TUSSL	tr 199°	YOTVU	tr 252°	BUUSH	tr 310°	WOSUV
----------------------	-------	-------	---------	-------	---------	-------	---------	-------



ELEV 5537	TDZE 5498
-----------	-----------



CATEGORY	A	B	C	D
LNVA MDA	7420-1¼ 1922 (1900-1¼)	7420-1½ 1922 (1900-1½)	7420-3 1922 (1900-3)	
CIRCLING	7420-1¼ 1883 (1900-1¼)	7420-1½ 1883 (1900-1½)	7420-3 1883 (1900-3)	8100-3 2563 (2600-3)

HIRL Rwy 8-26 **0**

REIL Rwy 8 **0**