

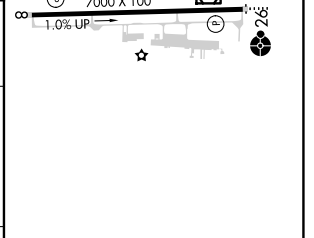
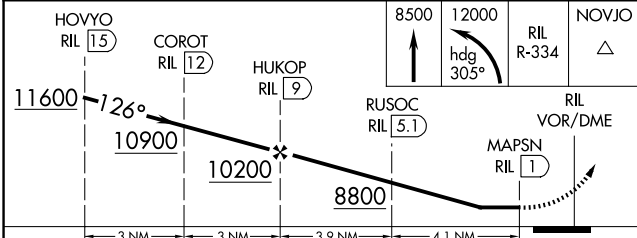
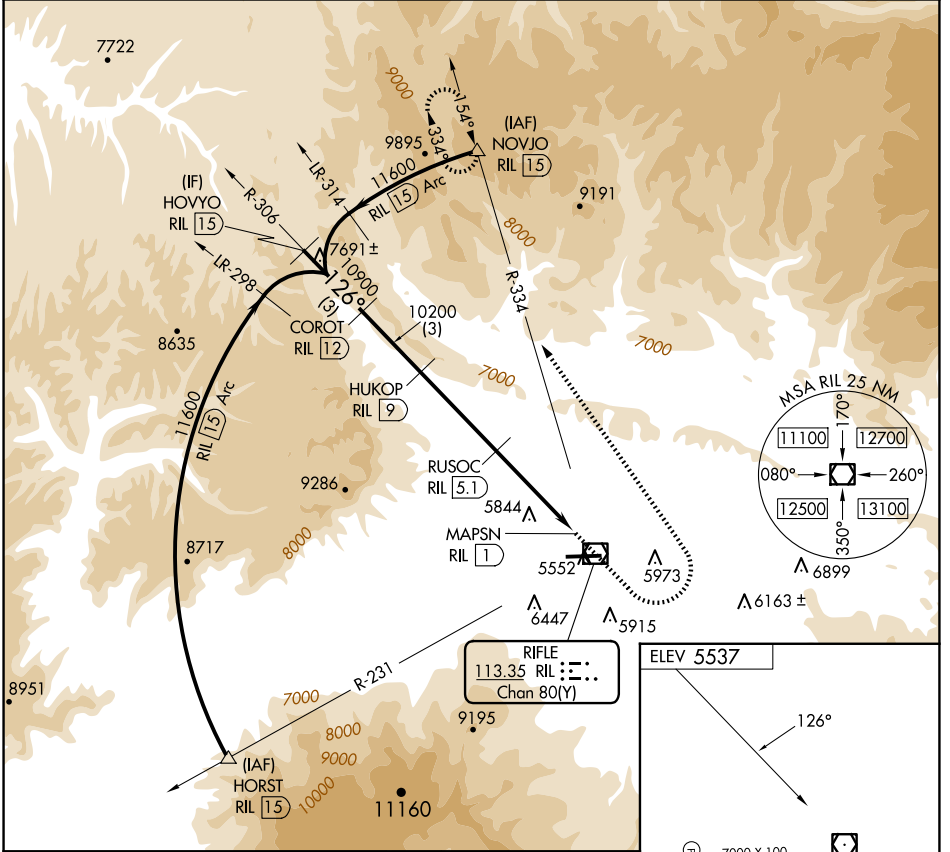
VOR/DME RIL <b>113.35</b> Chan <b>80</b> (Y)	APP CRS <b>126°</b>	Rwy Idg TDZE Apt Elev <b>N/A</b> <b>N/A</b> <b>5537</b>
--	------------------------	--

# VOR/DME-C

RIFLE GARFIELD COUNTY (RIL)

<p>Circling NA south of Rwy 8-26 at night. -14°C</p>	<p>MISSED APPROACH: Climb to 8500 then climbing left turn 12000 on heading 305° and RIL VOR/DME R-334 to NOVJO/15 DME and hold, continue climb-in-hold to 12400.</p>
--	--

ASOS <b>135.275</b>	DENVER CENTER <b>134.95 327.075</b>	UNICOM <b>122.8</b> (CTAF)
------------------------	--	-------------------------------



CATEGORY	A	B	C	D
CIRCLING	7360-1¼ 1823 (1900-1¼)	7360-1½ 1823 (1900-1½)	7360-3 1823 (1900-3)	NA

HIRL Rwy 8-26
REIL Rwy 8

SW-1, 17 APR 2025 to 15 MAY 2025

SW-1, 17 APR 2025 to 15 MAY 2025