

WAAS CH 72918 W35A	APP CRS 350°	Rwy Idg TDZE Apt Elev	5002 3278 3315
--	------------------------	-----------------------------	---

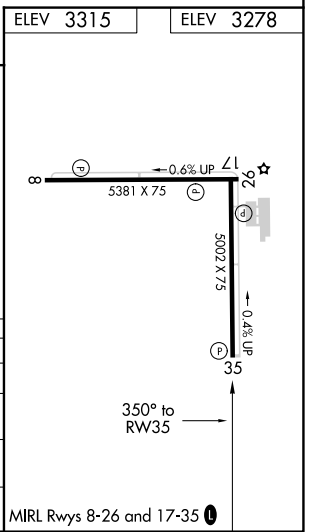
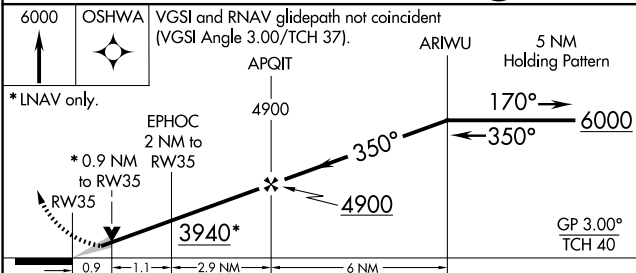
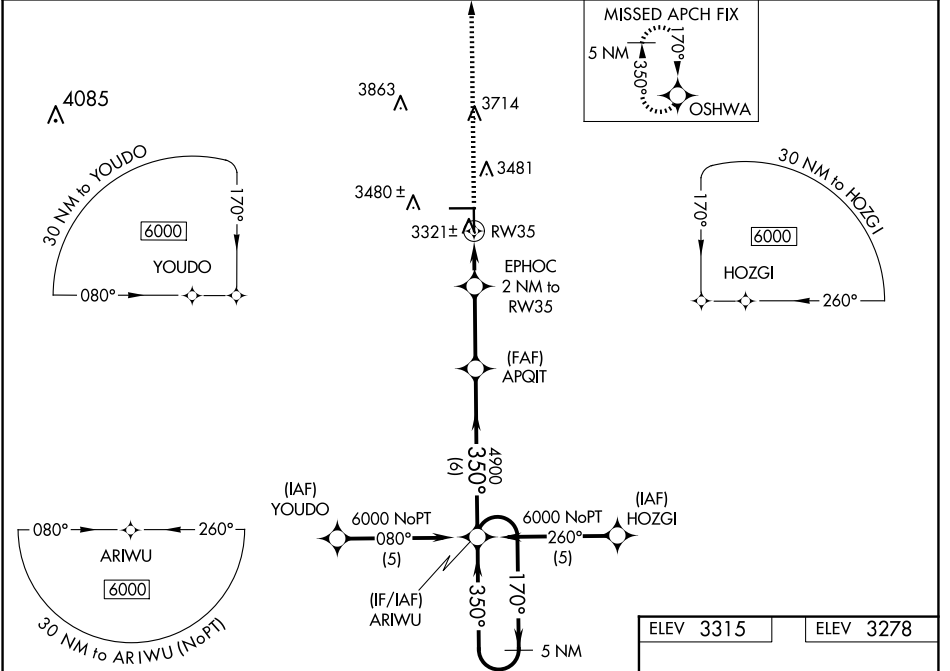
RNAV (GPS) RWY 35

GAINES COUNTY (GNC)

⚠ For uncompensated Baro-VNAV systems, LNAV/VNAV NA below -21°C (-5°F) or above 54°C (130°F).
⚠ DME/DME RNP-0.3 NA. When local altimeter setting not received, use Midland Intl Air and Space Port altimeter setting and increase LPV DA to 3704 feet and all visibilities ½ SM; increase LNAV/VNAV DA to 3767 feet and all visibilities ¾ SM; increase all MDAs 180 feet and visibility LNAV and Circling Cat C ½ SM. Baro-VNAV and VDP NA when using Midland Intl Air and Space Port altimeter setting.

MISSED APPROACH: Climb to 6000 direct OSHWA and hold, continue climb-in-hold to 6000.

AWOS-3 118.075	FORT WORTH CENTER 132.6 269.05	UNICOM 122.8 (CTAF) 📶
--------------------------	--	--



CATEGORY	A	B	C	D
LPV DA	3528-1	250 (300-1)		NA
LNAV/VNAV DA	3591-1¼	313 (300-1¼)		NA
LNAV MDA	3580-1	302 (300-1)		NA
CIRCLING	3840-1 525 (600-1)	3880-1 565 (600-1)	3940-1¾ 625 (700-1¾)	NA

SC-2, 17 APR 2025 to 15 MAY 2025

SC-2, 17 APR 2025 to 15 MAY 2025