

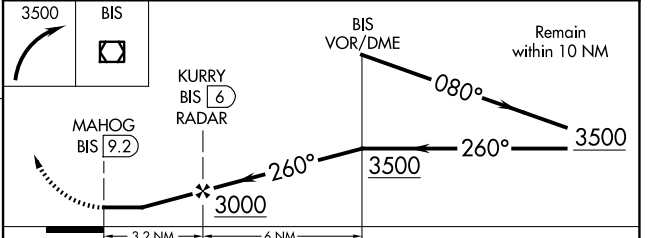
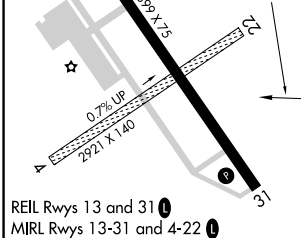
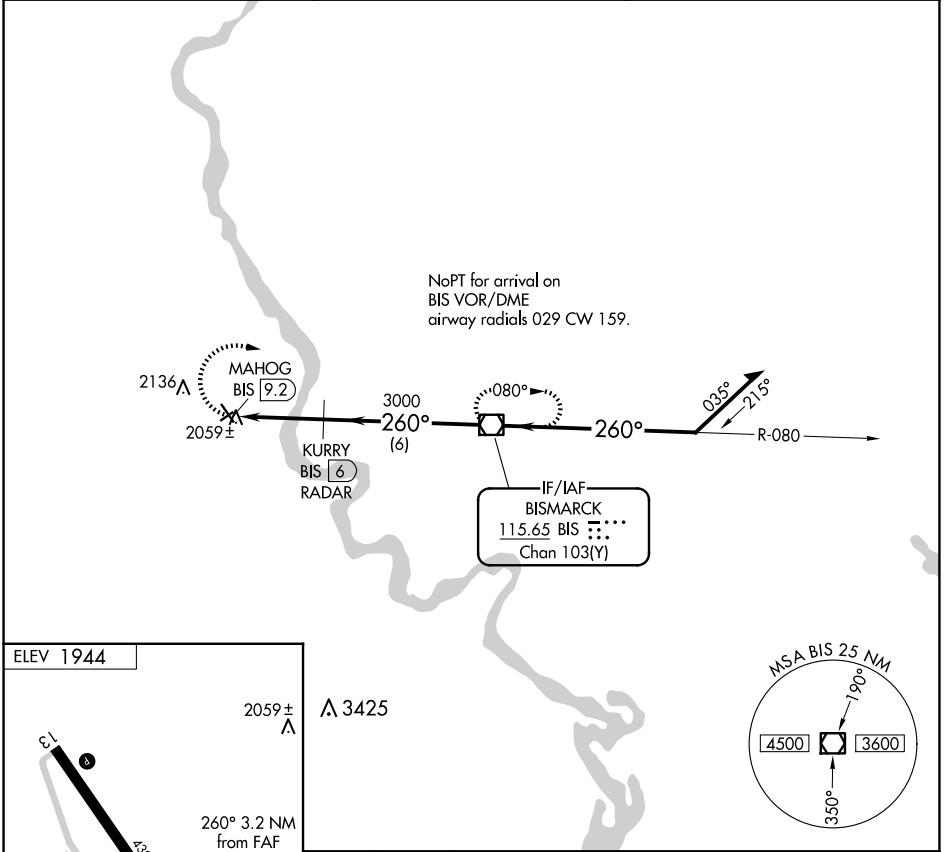
VOR/DME BIS 115.65 Chan 103(Y)	APP CRS 260°	Rwy Idg TDZE Apt Elev 1944	N/A N/A 1944
--	------------------------	---	---

VOR-A

MANDAN RGNL/LAWLER FLD (Y19)

<p>⚠ DME or RADAR required. When local altimeter setting not received, use Bismarck altimeter setting and increase all MDA 60 feet, and Cat D visibility ¼ mile. Circling to Rwys 4 and 22 NA.</p>	<p>MISSED APPROACH: Climbing right turn to 3500 direct BIS VOR/DME and hold.</p>
---	--

AWOS-3 118,225	BISMARCK APP CON * 126.3 298.9	UNICOM 122.8 (CTAF) 0
--------------------------	--	---------------------------------



FAF to MAP 3.2 NM					
Knots	60	90	120	150	180
Min:Sec	3:12	2:08	1:36	1:17	1:04

CATEGORY	A	B	C	D
C CIRCLING	2360-1 416 (500-1)	2460-1 516 (600-1)	2460-1½ 516 (600-1½)	2560-2 616 (700-2)

VOR-A

NC-1, 17 APR 2025 to 15 MAY 2025

NC-1, 17 APR 2025 to 15 MAY 2025