

WAAS CH <b>63234</b> <b>W18A</b>	APP CRS <b>177°</b>	Rwy Idg TDZE <b>1152</b> Apt Elev <b>1153</b>	<b>3914</b> <b>1152</b> <b>1153</b>
--	------------------------	---	---

# RNAV (GPS) RWY 18

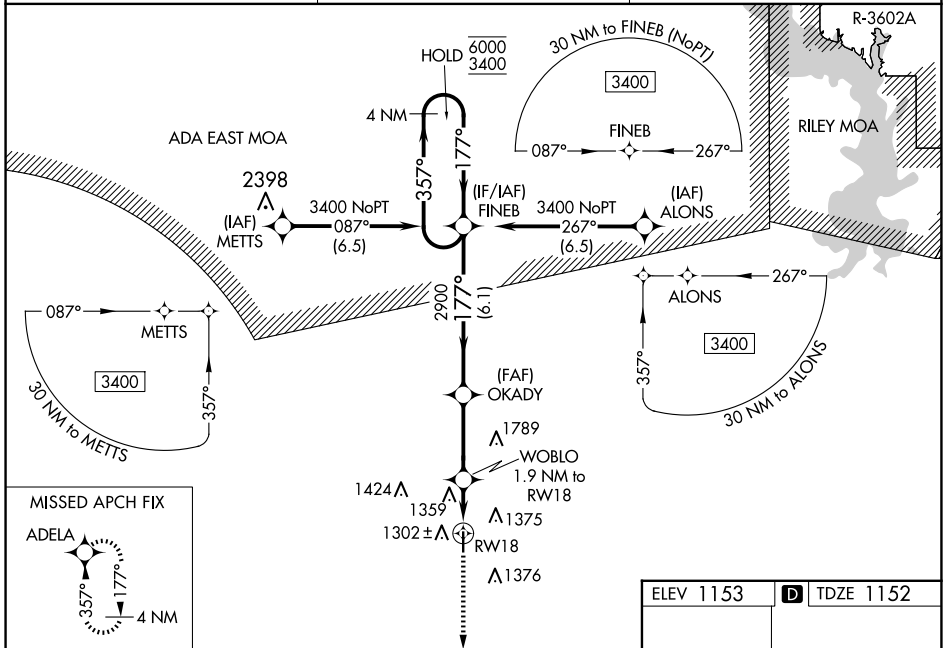
ABILENE MUNI (K78)

RNP APCH - GPS.

**NA** Rwy 18 helicopter visibility reduction below 3/4 SM NA. For uncompensated Baro-VNAV systems, LNAV/VNAV NA below -17°C or above 54°C. Baro-VNAV and VDP NA when using SLN altimeter setting. When local altimeter setting not received, use SLN altimeter setting and increase LPV DA to 1565 feet and all visibilities 3/8 SM; increase LNAV/VNAV DA to 1710 feet and all visibilities 1/4 SM; increase all MDAs 80 feet and LNAV visibility Cat C 1/4 SM, and Circling visibility Cat C 1/4 SM.

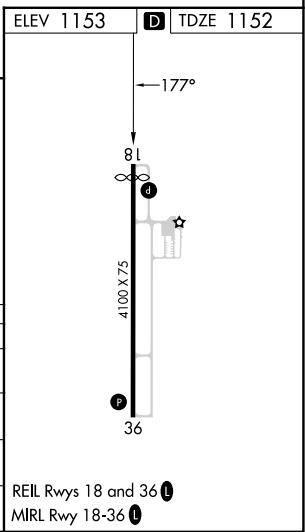
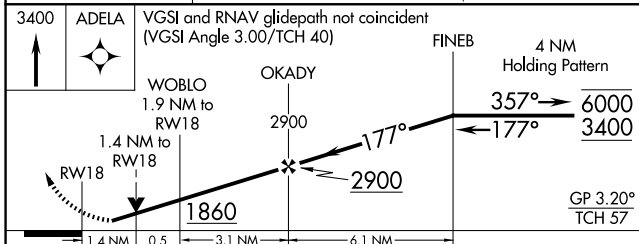
MISSED APPROACH: Climb to 3400 direct ADELA and hold.

AWOS-2 <b>124.125</b>	MARSHALL AAF GCA* <b>121.25 269.05</b>	UNICOM <b>122.8 (CTAF)</b>
--------------------------	---	-------------------------------



NC-2, 17 APR 2025 to 15 MAY 2025

NC-2, 17 APR 2025 to 15 MAY 2025



CATEGORY	A	B	C	D
LPV DA	1498-1	346 (400-1)		NA
LNAV/VNAV DA	1643-1 3/8	491 (500-1 3/8)		NA
LNAV MDA	1660-1	508 (600-1)	1660-1 3/8 508 (600-1 3/8)	NA
<b>C</b> CIRCLING	1680-1	527 (600-1)	1900-2 1/4 747 (800-2 1/4)	NA