

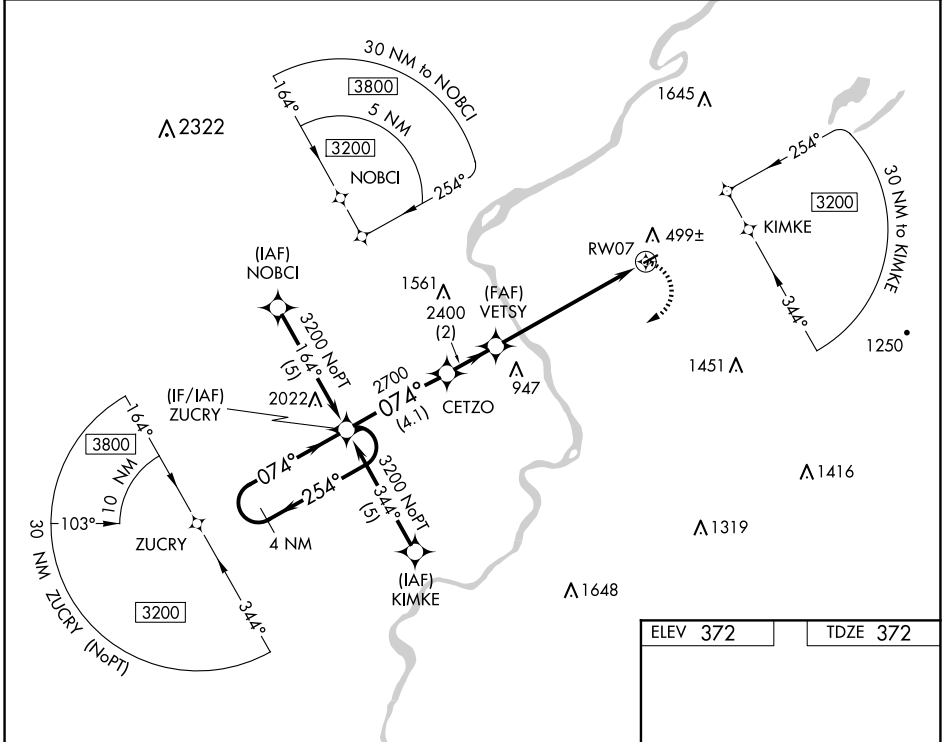
APP CRS 074°	Rwy Idg TDZE Apt Elev	2794 372 372
------------------------	-----------------------------	-----------------------------------------

RNAV (GPS) RWY 7

BLAIRSTOWN (1N7)

RNP APCH.	<p>When local altimeter setting not received, use Lehigh Valley altimeter setting. Procedure NA at night. Rwy 7 helicopter visibility reduction below 1 SM NA.</p>	<p>MISSED APPROACH: Climbing right turn to 3200 direct ZUCRY and hold.</p>
<p>▼ ▲ NA</p>		

NEWARK APP CON 127.6 379.9	UNICOM 123.0 (CTAF) 0
--------------------------------------	---------------------------------



NE-2, 17 APR 2025 to 15 MAY 2025

NE-2, 17 APR 2025 to 15 MAY 2025

4 NM Holding Pattern		Visual Segment - Obstacles.		3200	ZUCRY
CATEGORY	A	B	C	D	
LNAV MDA	1140-1 768 (800-1)	1140-1¼ 768 (800-1¼)		NA	
LEHIGH VALLEY ALTIMETER SETTING MINIMUMS					
LNAV MDA	1420-1¼ 1048 (1100-1¼)	1420-1½ 1048 (1100-1½)		NA	

