

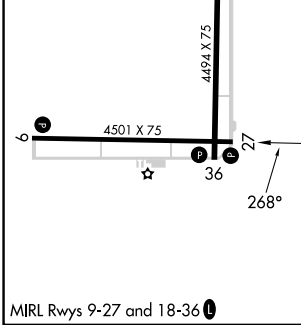
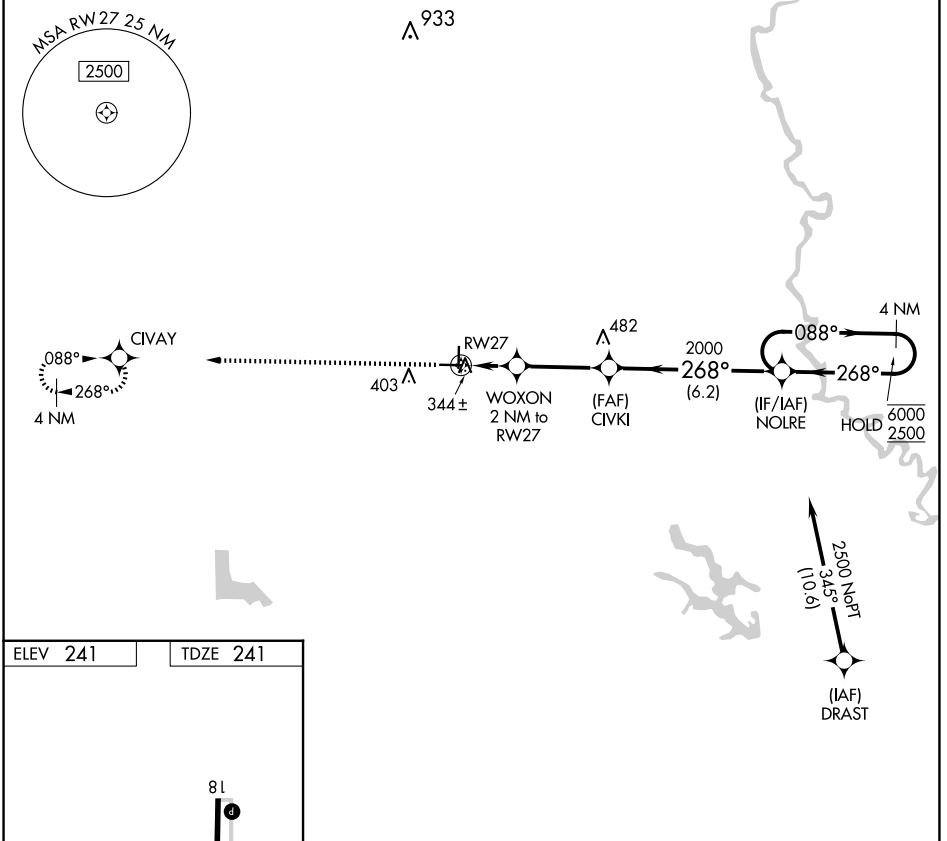
APP CRS	Rwy Idg	4501
268°	TDZE	241
	Apt Elev	241

RNAV (GPS) RWY 27

CARLISLE MUNI (4M3)

RNP APCH-GPS.	<p>MISSED APPROACH: Climb to 2500 direct CIVAY and hold.</p>
<p>Procedure NA at night. Rwy 27 helicopter visibility reduction below 1 SM NA. When local altimeter setting not received, use Stuttgart altimeter setting.</p>	

AWOS-2 119.275	LITTLE ROCK APP CON 135.4 353.6	CLNC DEL 135.4	UNICOM 122.8 (CTAF)
--------------------------	---	--------------------------	-------------------------------



2500	CIVAY	NOLRE		4 NM Holding Pattern
↑	✧	WOXON 2 NM to RWY 27	CIVKI	268° → 6000 ← 268° 2500
		920	2000	
		2 NM	3.3 NM	6.2 NM
CATEGORY	A	B	C	D
LNAV MDA	640-1	399 (400-1)	NA	

SC-1, 17 APR 2025 to 15 MAY 2025

SC-1, 17 APR 2025 to 15 MAY 2025