

(ADEXE1.ADEXE) 20030

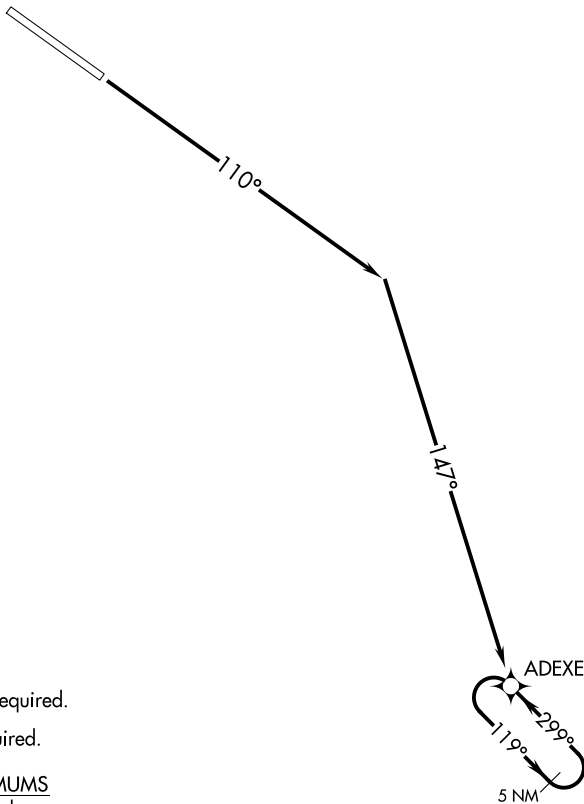
# ADEXE ONE DEPARTURE (OBSTACLE) (RNAV)

AL-6807 (FAA)

NAMPA MUNI (MAN)

NAMPA, IDAHO

BIG SKY APP CON  
119.6 269.4  
CTAF  
122.7



NOTE: RNAV 1.

NOTE: RADAR required.

NOTE: GPS required.

### TAKEOFF MINIMUMS

Rwy 11: Standard.

### TAKEOFF OBSTACLE NOTES

Rwy 11: Trees, fence, building, pole, and vehicle on road beginning 77' from DER, 82' left of centerline, up to 71' AGL/2611' MSL.

Pole 478' from DER, 298' right of centerline, 27' AGL/2548' MSL.

Pole 1043' from DER, 340' right of centerline, 35' AGL/2557' MSL.

NOTE: Chart not to scale.

### DEPARTURE ROUTE DESCRIPTION

TAKEOFF RUNWAY 11: Climb heading 110° to intercept course 147° to ADEXE then continue climb in ADEXE holding pattern. Expect further clearance when reaching 5000.

# ADEXE ONE DEPARTURE (OBSTACLE) (RNAV)

(ADEXE1.ADEXE) 12OCT17

NAMPA, IDAHO  
NAMPA MUNI (MAN)

NW-1, 17 APR 2025 to 15 MAY 2025

NW-1, 17 APR 2025 to 15 MAY 2025