

APP CRS 290°	Rwy Idg TDZE Apt Elev	N/A N/A 2537
------------------------	-----------------------------	---

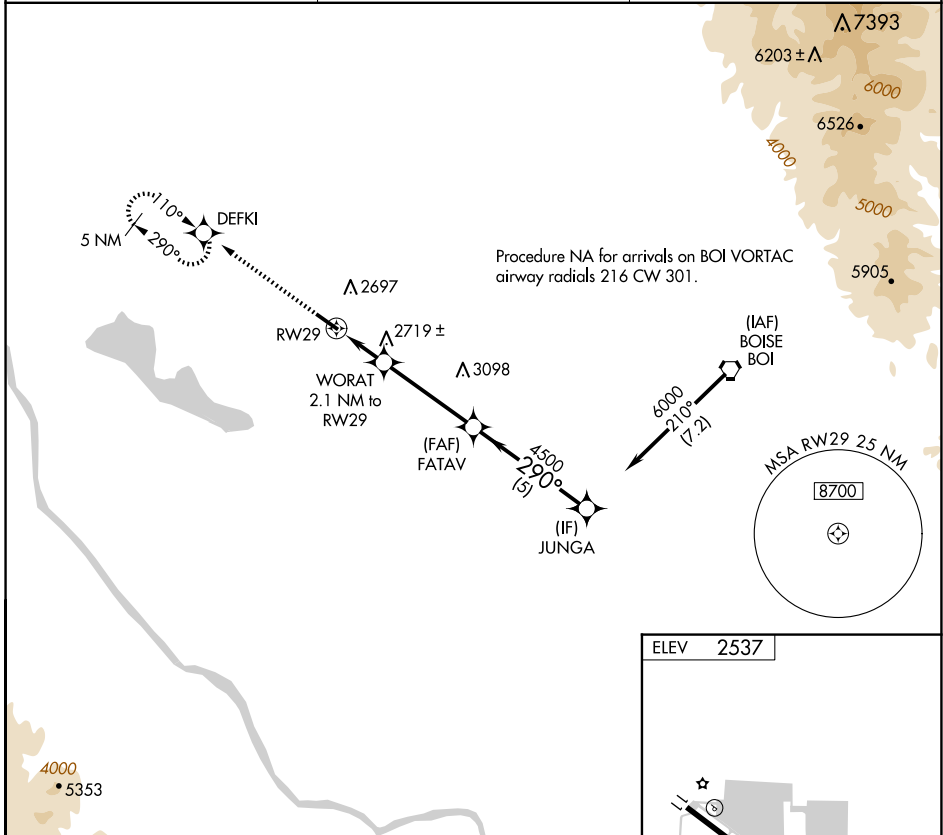
RNAV (GPS)-B

NAMPA MUNI (MAN)

⚠ Night landing: Rwy 29, operational VGSI required, remain on or above VGSI glidepath until threshold. DME/DME RNP -0.3 NA. When local altimeter setting not received, use Caldwell Industrial altimeter setting and increase all MDA 40 feet and visibility Cat C ¼ SM. Helicopter visibility reduction below 1 SM NA.

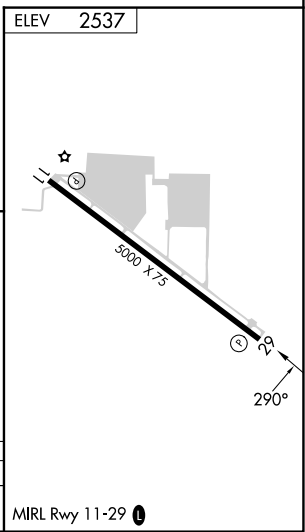
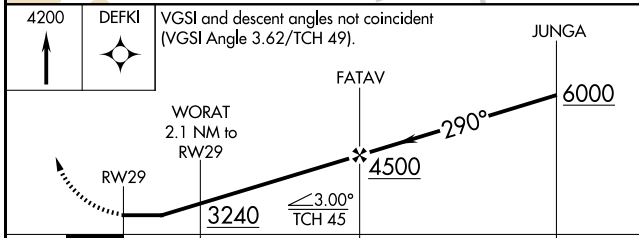
⚠ MISSED APPROACH: Climb to 4200 direct DEFKI and hold.

AWOS-3 118.325	BIG SKY APP CON 119.6 269.4	UNICOM 122.7 (CTAF) 0
--------------------------	---------------------------------------	---------------------------------



NW-1, 17 APR 2025 to 15 MAY 2025

NW-1, 17 APR 2025 to 15 MAY 2025



CATEGORY	A	B	C	D
C CIRCLING	3060-1	523 (600-1)	3100-1½ 563 (600-1½)	3220-2¼ 683 (700-2¼)