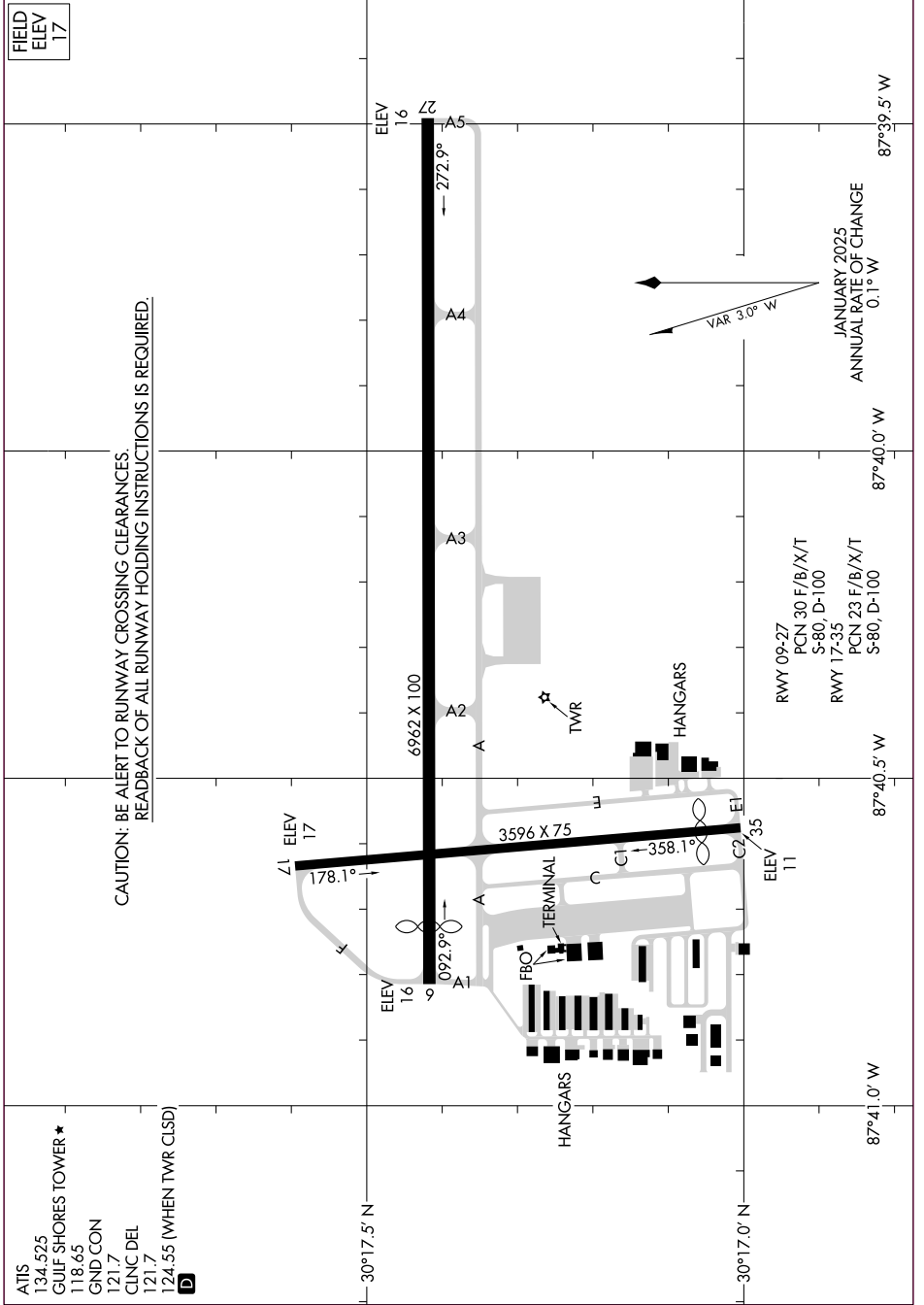


AIRPORT DIAGRAM

GULF SHORES INTL/JACK EDWARDS FLD (JKA)
AL-6827 (FAA)
GULF SHORES, ALABAMA



FIELD
ELEV
17

CAUTION: BE ALERT TO RUNWAY CROSSING CLEARANCES.
READBACK OF ALL RUNWAY HOLDING INSTRUCTIONS IS REQUIRED.

VAR 3.0° W

JANUARY 2025
ANNUAL RATE OF CHANGE
0.1° W

RWY 09-27
PCN 30 F/B/X/T
S-80, D-100
RWY 17-35
PCN 23 F/B/X/T
S-80, D-100

ATIS
134.525
GULF SHORES TOWER ★
118.65
GND CON
121.7
CLNC DEL
121.7
124.55 (WHEN TWR CLSD)

AIRPORT DIAGRAM

GULF SHORES, ALABAMA
GULF SHORES INTL/JACK EDWARDS FLD (JKA)

SE-4, 17 APR 2025 to 15 MAY 2025

SE-4, 17 APR 2025 to 15 MAY 2025